

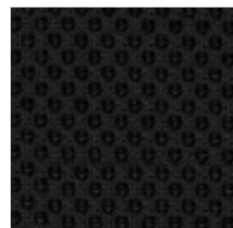
RR
Gabriel, Runner

Cat. 3

Designer Inger Mosholt Nielsen
100% PL
70.000 Martindale



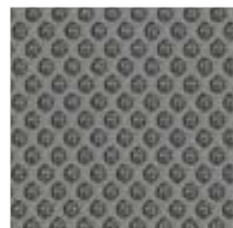
RR08_Runner 66064



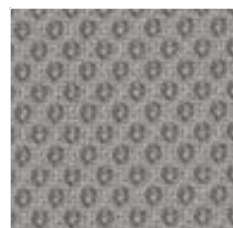
RR01_Runner 60999



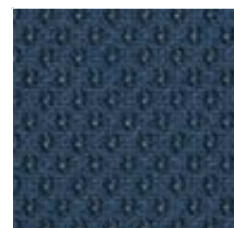
RR02_Runner 60025



RR03_Runner 60011



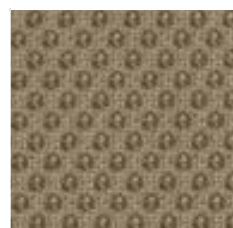
RR14_Runner 60165



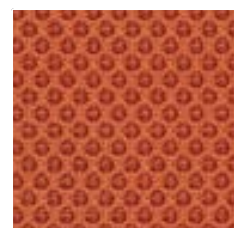
RR12_Runner 66140



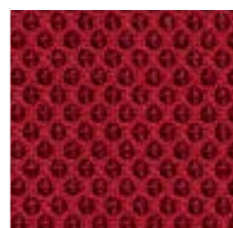
RR05_Runner 68056



RR13_Runner 61110



RR06_Runner 63034



RR07_Runner 64089

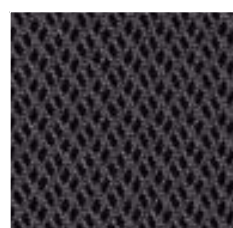
100% PL Fr
100.000 Martindale

RY
Gabriel, Rhythm

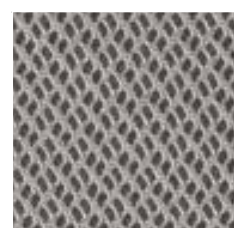
Cat. 4



RY01_Rhythm 60999



RY02_Rhythm 60025



RY03_Rhythm 60165



RY04_Rhythm 66138

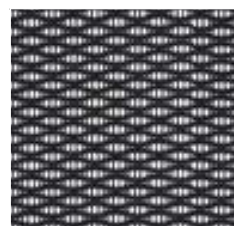


RY06_Rhythm 63068

100% PL
100.000 Martindale

IR
FiDiVi Service, Iron

Cat. 5



IR01



	Composizione	Composition
PA	Poliammidica	Polyamide
PL	Poliestere	Polyester
PL Fr	Poliestere ignifugo	Flame retardant polyester
Tr Cs	Trevira CS	Trevira CS
W	Lana	Wool
WV	Lana Vergine	Virgin Wool

	Caratteristiche	Features
	Ignifugo	Flame retardant
	Riciclabile	Recyclable
	Riciclato	Recycled

	Certificazioni	Certifications
	Non contiene metalli pesanti	No heavy metals
	EU Ecolabel è un marchio europeo che certifica il ridotto impatto ambientale del prodotto	EU Ecolabel is a European brand that certifies the reduced environmental impact of the product
	GREENGUARD Certification è un marchio europeo che certifica il basso livello di emissioni chimiche	GREENGUARD Certification is a brand that certifies the low level of chemical emissions
	L'etichetta Oeko-Tex® STANDARD 100 garantisce che si può essere certi che ogni componente di questo articolo è stato testato per le sostanze nocive e che l'articolo è quindi innocuo in termini ecologici umani	The Oeko-Tex® STANDARD 100 label guarantees that every component of the article, has been tested for harmful substances and that the article therefore is harmless in human ecological terms

Note sui rivestimenti – Per ragioni tecniche non è possibile garantire lo stesso tono di colore tra un lotto di produzione ed un altro. Leggere differenze, con una tolleranza del ±5% devono intendersi come normali e non possono dar adito a reclami o alla risoluzione del contratto. Sitland spa si riserva il diritto di apportare modifiche alle finiture contenute nella presente cartella senza preavviso alcuno. Ulteriori informazioni sulle caratteristiche tecniche di ogni singolo rivestimento sono disponibili nel sito www.sitland.com

Pulizia e manutenzione – Per la manutenzione dei tessuti consigliamo di passare con frequenza almeno mensile la superficie, utilizzando un aspirapolvere. In caso di unto, utilizzare solamente un panno leggermente umido e sapone neutro, non strofinare e lasciare asciugare naturalmente.

Note on upholstery – For technical reasons, batch to batch variations in shade may occur. Slight differences, within a tolerance of ±5%, are to be considered as normal and acceptable and they cannot give rise to claims or to a breach of contract. Sitland spa reserves the right to make modifications to the finishes contained in the present folder without any prior communication. Further information on the technical characteristics of each individual upholstery is available on the website www.sitland.com

Cleaning and maintenance – For the fabrics maintenance, we suggest you to regularly vacuum clean. Stains can be cleaned with a soft damp cloth and mild soap; do not rub and allow to dry naturally.

Sitland spa
Via Cà Silvestre 52
36024 Nanto, Vicenza - I
t +39 0444 637 100
f +39 0444 638 407
info@sitland.com
www.sitland.com

Follow us on

Tessuti e reti / Fabrics and meshes / Gewebe und Maschen / Tissus et Mailles / Tejidos y Mallas

Tessuti e reti / Fabrics and meshes / Gewebe und Maschen / Tissus et Mailles / Tejidos y Mallas

sitland

sitland

CARFT22023

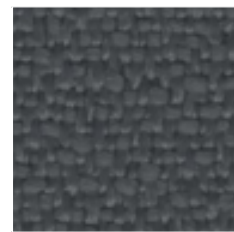
BN
FiDiVi, Bondai

Cat. 1

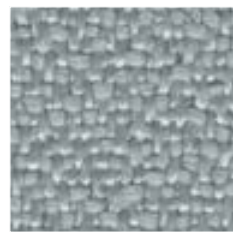
100% PL
150.000 Martindale



BN01_Bondai 8033



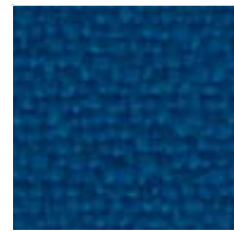
BN04_Bondai 8010



BN18_Bondai 8078



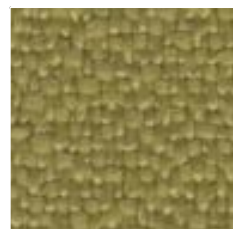
BN29_Bondai 8004



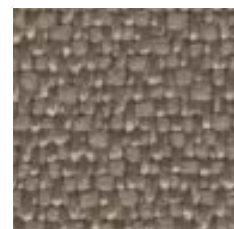
BN02_Bondai 6016



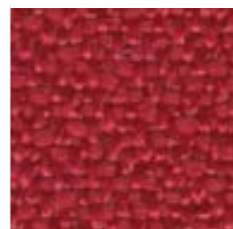
BN22_Bondai 6003



BN12_Bondai 7021



BN20_Bondai 1008

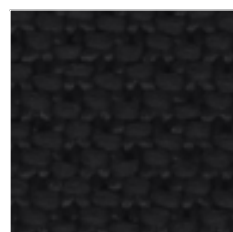
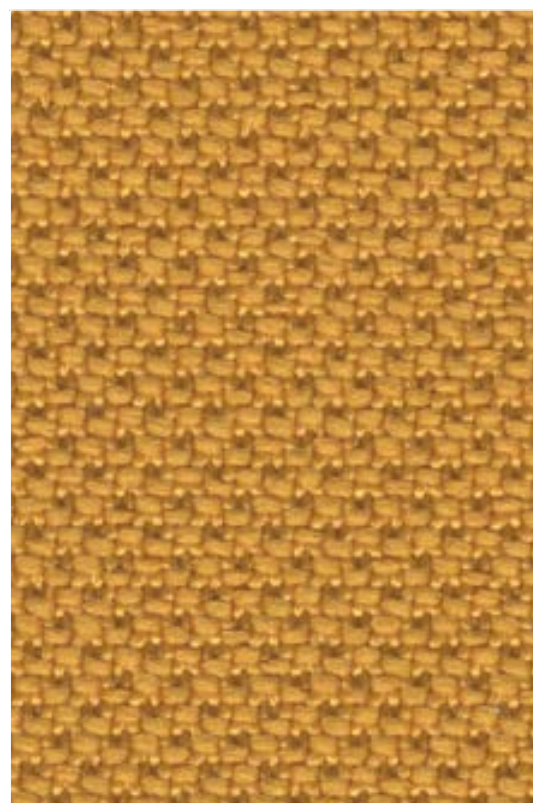


BN05_Bondai 4011

AL
FiDiVi, Alba

Cat. 1

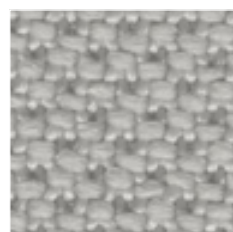
100% PL
100.000 Martindale



AL01_Alba 8033



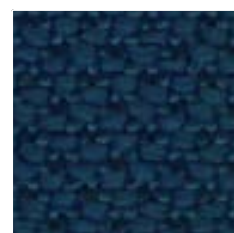
AL02_Alba 8003



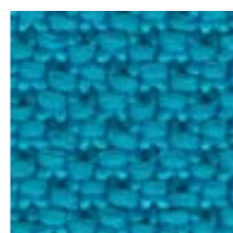
AL03_Alba 8078



AL20_Alba 2005



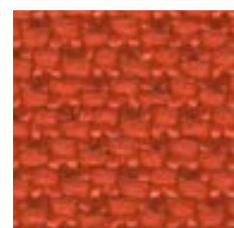
AL05_Alba 6098



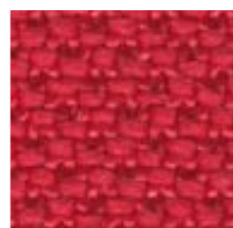
AL09_Alba 6007



AL19_Alba 1006



AL13_Alba 4004

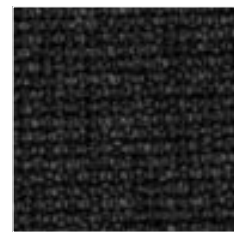


AL07_Alba 4027

ME
Gabriel, Medley

Cat. 2

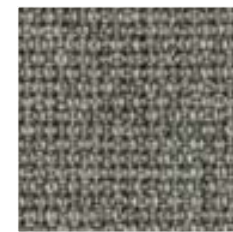
Designer Mette Krebs Petersen
100% PL
75.000 Martindale



ME01_Medley 60999



ME02_Medley 60004



ME03_Medley 60003



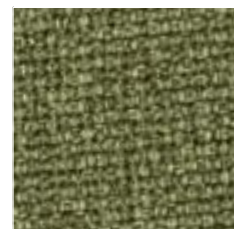
ME09_Medley 66010



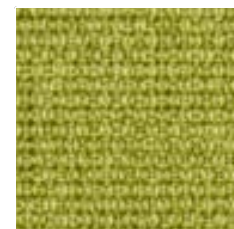
ME15_Medley 66007



ME16_Medley 66008



ME13_Medley 68005



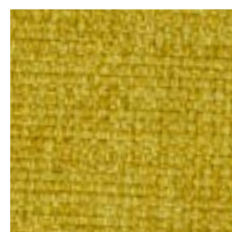
ME11_Medley 68002



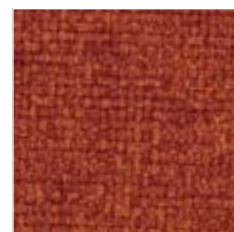
ME04_Medley 61002



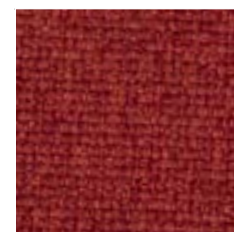
ME28_Medley 63063



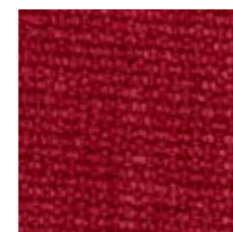
ME12_Medley 62002



ME19_Medley 63017



ME06_Medley 63016



ME18_Medley 64019

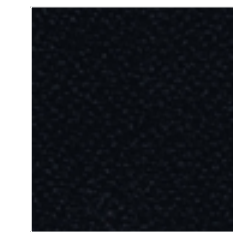
AB
Camira, Xtreme Plus

Cat. 2

100% post-consumer recycled PL
100.000 Martindale



AB12_Xtreme YS081



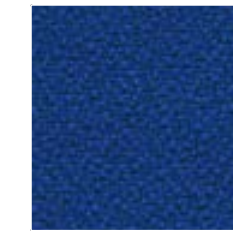
AB03_Xtreme YS009



AB51_Xtreme YS172



AB38_Xtreme YS046



AB04_Xtreme YS082



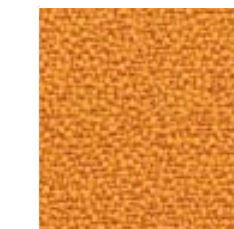
AB40_Xtreme YS047



AB35_Xtreme YS071



AB17_Xtreme YS108



AB37_Xtreme YS072

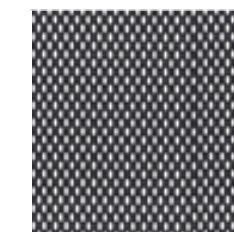


AB15_Xtreme YS079

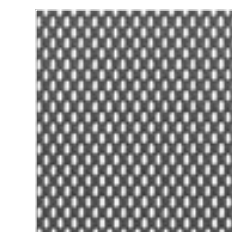
RF
FiDiVi Service, Polo

Cat. 2

100% PL
100.000 Martindale



RF01



RF04



RF02



RF15



RF03

RP
Serge Ferrari, Net Medium

Cat. 3

70% PVC, 30% PL
100.000 Martindale



RP10