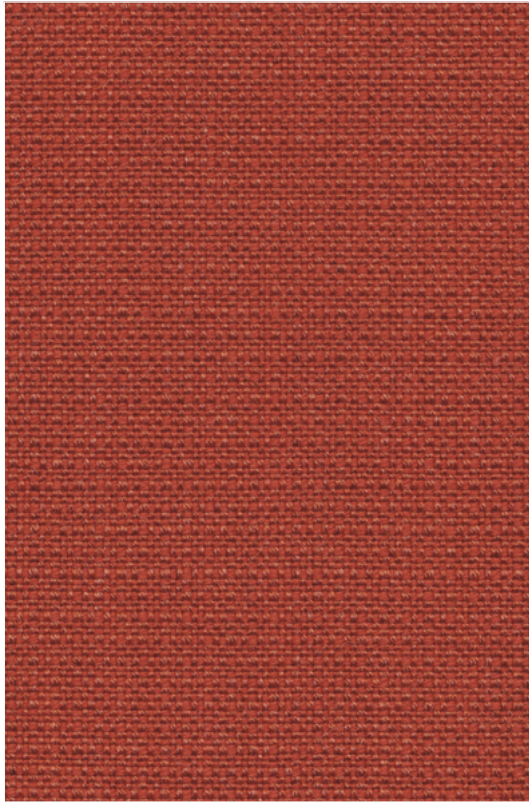


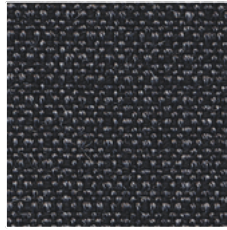
CS
Gabriel, Crisp

Cat. 5

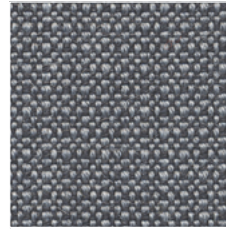
Designer Mette Krebs Petersen
93% W of New Zealand, 7% PA
200.000 Martindale



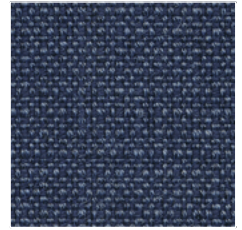
CS42_Crisp 04302



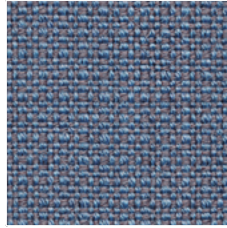
CS38_Crisp 04013



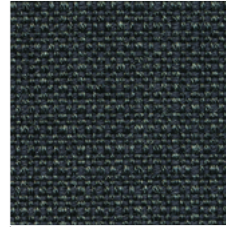
CS40_Crisp 04022



CS43_Crisp 04741



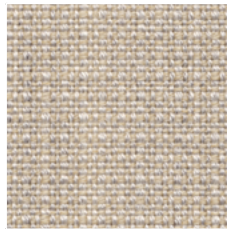
CS04_Crisp 04604



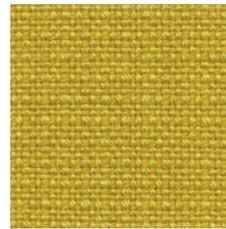
CS36_04761



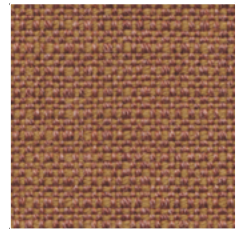
CS05_Crisp 04115



CS07_Crisp 04032



CS44_Crisp 04211




CS45_Crisp 04701

	Composizione	Composition
PA	Poliamidica	Polyamide
WV	Lana Vergine	Virgin Wool




Note sui rivestimenti — Per ragioni tecniche non è possibile garantire lo stesso tono di colore tra un lotto di produzione ed un altro. Leggere differenze, con una tolleranza del $\pm 5\%$ devono intendersi come normali e non possono dar adito a reclami o alla risoluzione del contratto. Sitland spa si riserva il diritto di apportare modifiche alle finiture contenute nella presente cartella senza preavviso alcuno. Ulteriori informazioni sulle caratteristiche tecniche di ogni singolo rivestimento sono disponibili nel sito www.sitland.com

Pulizia e manutenzione – Per la manutenzione dei tessuti consigliamo di passare con frequenza almeno mensile la superficie, utilizzando un aspirapolvere. In caso di unto, utilizzare solamente un panno leggermente umido e sapone neutro, non strofinare e lasciare asciugare naturalmente.

	Caratteristiche	Features
	Ignifugo	Flame retardant

Note on upholstery – For technical reasons, batch to batch variations in shade may occur. Slight differences, within a tolerance of $\pm 5\%$, are to be considered as normal and acceptable and they cannot give rise to claims or to a breach of contract. Sitland spa reserves the right to make modifications to the finishes contained in the present folder without any prior communication. Further information on the technical characteristics of each individual upholstery is available on the website www.sitland.com

Cleaning and maintenance – For the fabrics maintenance, we suggest you to regularly vacuum clean. Stains can be cleaned with a soft damp cloth and mild soap; do not rub and allow to dry naturally.

	Certificazioni	Certifications
	Non contiene metalli pesanti	No heavy metals
	EU Ecolabel è un marchio europeo che certifica il ridotto impatto ambientale del prodotto	EU Ecolabel is a European brand that certifies the reduced environmental impact of the product
	L'etichetta Oeko-Tex® STANDARD 100 garantisce che si può essere certi che ogni componente di questo articolo è stato testato per le sostanze nocive e che l'articolo è quindi innocuo in termini ecologici umani	The Oeko-Tex® STANDARD 100 label guarantees that every component of the article, has been tested for harmful substances and that the article therefore is harmless in human ecological terms

Sitland spa
 Via Cà Silvestre 52
 36024 Nanto, Vicenza - I
 t +39 0444 637100
 f +39 0444 638407
info@sitland.com
www.sitland.com

Follow us on

