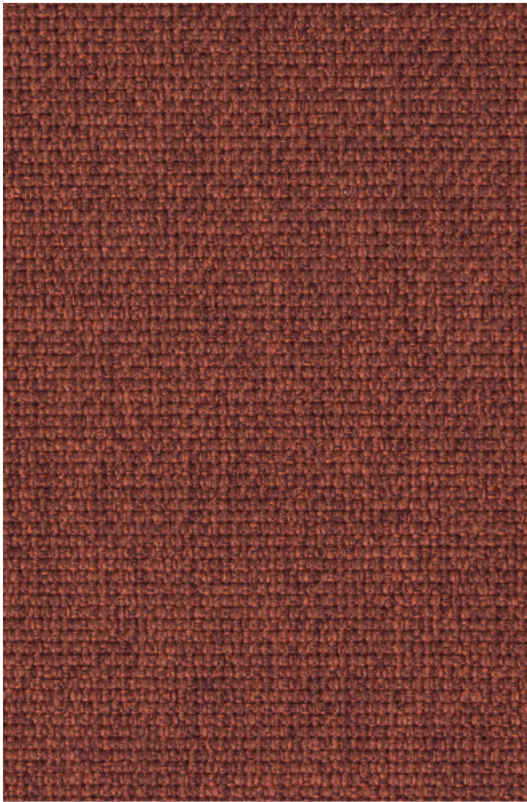


ME
Gabriel, Medley

Cat. 2

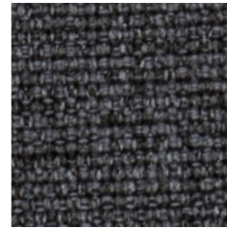
Designer Mette Krebs Petersen
100% PL
75.000 Martindale



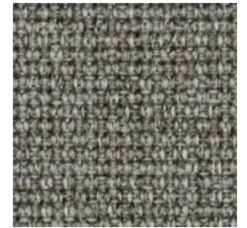
ME28_Medley 63063



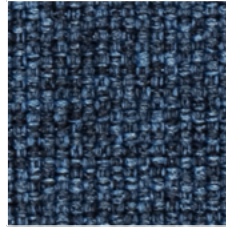
ME01_Medley 60999



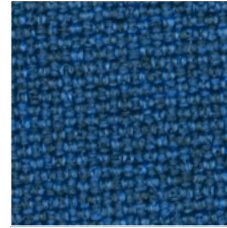
ME02_Medley 60004



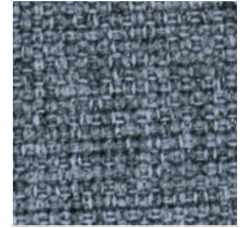
ME03_Medley 60003



ME09_Medley 66010



ME15_Medley 66007



ME16_Medley 66008



ME13_Medley 68005



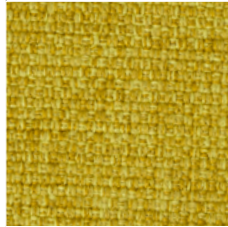
ME11_Medley 68002



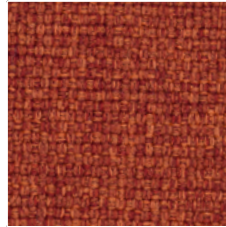
ME04_Medley 61002



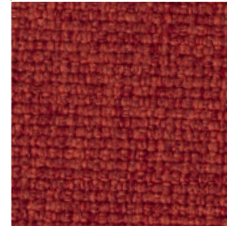
ME21_Medley 61003



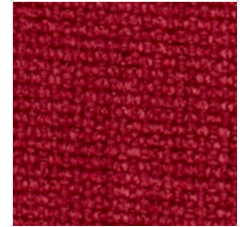
ME12_Medley 62002



ME19_Medley 63017



ME06_Medley 63016




ME18_Medley 64019

	Composizione	Composition
PL	Poliestere	Polyester


Note sui rivestimenti — Per ragioni tecniche non è possibile garantire lo stesso tono di colore tra un lotto di produzione ed un altro. Leggere differenze, con una tolleranza del $\pm 5\%$ devono intendersi come normali e non possono dar adito a reclami o alla risoluzione del contratto. Sitland spa si riserva il diritto di apportare modifiche alle finiture contenute nella presente cartella senza preavviso alcuno. Ulteriori informazioni sulle caratteristiche tecniche di ogni singolo rivestimento sono disponibili nel sito www.sitland.com


Pulizia e manutenzione – Per la manutenzione dei tessuti consigliamo di passare con frequenza almeno mensile la superficie, utilizzando un aspirapolvere. In caso di unto, utilizzare solamente un panno leggermente umido e sapone neutro, non strofinare e lasciare asciugare naturalmente.

	Caratteristiche	Features
	Ignifugo	Flame retardant

Note on upholstery – For technical reasons, batch to batch variations in shade may occur. Slight differences, within a tolerance of $\pm 5\%$, are to be considered as normal and acceptable and they cannot give rise to claims or to a breach of contract. Sitland spa reserves the right to make modifications to the finishes contained in the present folder without any prior communication. Further information on the technical characteristics of each individual upholstery is available on the website www.sitland.com

Cleaning and maintenance – For the fabrics maintenance, we suggest you to regularly vacuum clean. Stains can be cleaned with a soft damp cloth and mild soap; do not rub and allow to dry naturally.

	Certificazioni	Certifications
	Non contiene metalli pesanti	No heavy metals

	L'etichetta Oeko-Tex® STANDARD 100 garantisce che si può essere certi che ogni componente di questo articolo è stato testato per le sostanze nocive e che l'articolo è quindi innocuo in termini ecologici umani	The Oeko-Tex® STANDARD 100 label guarantees that every component of the article, has been tested for harmful substances and that the article therefore is harmless in human ecological terms
---	--	--

Sitland spa
 Via Cà Silvestre 52
 36024 Nanto, Vicenza - I
 t +39 0444 637 100
 f +39 0444 638 407
info@sitland.com
www.sitland.com

Follow us on

