

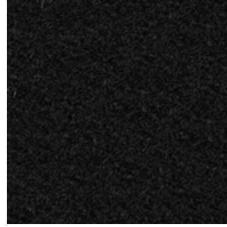
SY
Camira, Synergy

Cat. 5

95% WV, 5% PA
100.000 Martindale



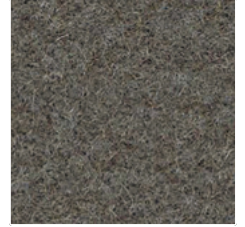
SY02_Synergy LDS08



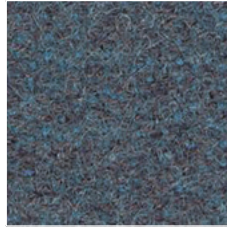
SY01_Synergy LDS27



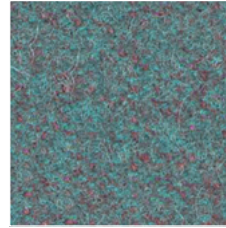
SY05_Synergy LDS17



SY04_Synergy LDS35



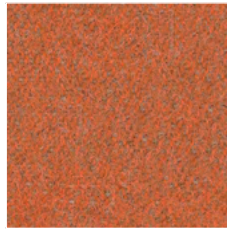
SY07_Synergy LDS58



SY09_Synergy LDS56



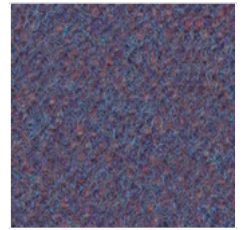
SY35_Synergy LDS33



SY10_Synergy LDS83



SY13_Synergy LDS84




SY32_Synergy LDS64

	Composizione	Composition
PA	Poliamidica	Polyamide
WV	Lana Vergine	Virgin Wool


Note sui rivestimenti — Per ragioni tecniche non è possibile garantire lo stesso tono di colore tra un lotto di produzione ed un altro. Leggere differenze, con una tolleranza del $\pm 5\%$ devono intendersi come normali e non possono dar adito a reclami o alla risoluzione del contratto. Sitland spa si riserva il diritto di apportare modifiche alle finiture contenute nella presente cartella senza preavviso alcuno. Ulteriori informazioni sulle caratteristiche tecniche di ogni singolo rivestimento sono disponibili nel sito www.sitland.com

Pulizia e manutenzione – Per la manutenzione dei tessuti consigliamo di passare con frequenza almeno mensile la superficie, utilizzando un aspirapolvere. In caso di unto, utilizzare solamente un panno leggermente umido e sapone neutro, non strofinare e lasciare asciugare naturalmente.

	Caratteristiche	Features
	Ignifugo	Flame retardant

Note on upholstery – For technical reasons, batch to batch variations in shade may occur. Slight differences, within a tolerance of $\pm 5\%$, are to be considered as normal and acceptable and they cannot give rise to claims or to a breach of contract. Sitland spa reserves the right to make modifications to the finishes contained in the present folder without any prior communication. Further information on the technical characteristics of each individual upholstery is available on the website www.sitland.com

Cleaning and maintenance – For the fabrics maintenance, we suggest you to regularly vacuum clean. Stains can be cleaned with a soft damp cloth and mild soap; do not rub and allow to dry naturally.

	Certificazioni	Certifications
	EU Ecolabel è un marchio europeo che certifica il ridotto impatto ambientale del prodotto	EU Ecolabel is a European brand that certifies the reduced environmental impact of the product

Sitland spa
 Via Cà Silvestre 52
 36024 Nanto, Vicenza - I
 t +39 0444 637100
 f +39 0444 638407
info@sitland.com
www.sitland.com

Follow us on

