

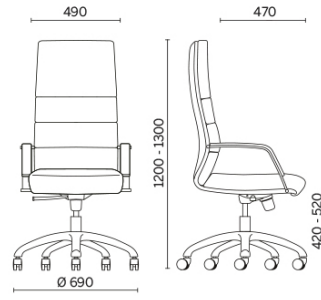
## Body



## Projects

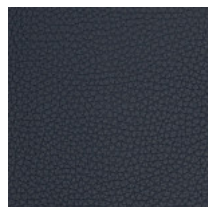
**Grupo Tervalis, Teruel, Spain (2017)**

## Executive

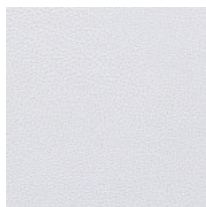


## Materials and colours

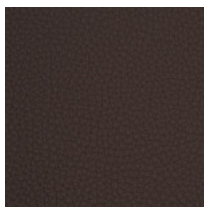
### Upholstery



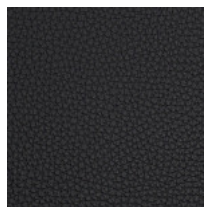
Coated fabric NX  
Available colours 11



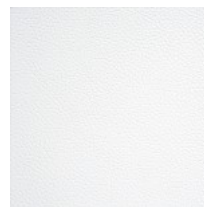
Coated fabric SC -  
Secret / Flukso  
Available colours 10



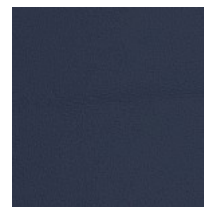
Coated fabric NX  
Available colours 1



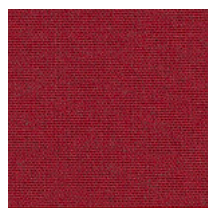
Leather SX + Coated  
fabric NX  
Available colours 12



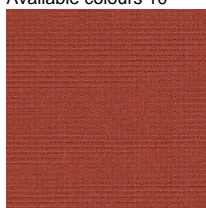
Leather PA - Panama /  
Dani  
Available colours 10



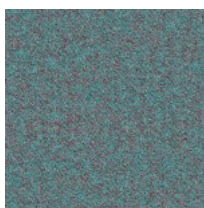
Leather TS - Florida /  
Dani  
Available colours 10



Fabric MF - Main Line  
Flax / Camira  
Available colours 10



Fabric CS - Crisp /  
Gabriel  
Available colours 10



Fabric SY - Sinergy /  
Camira  
Available colours 10

**Questo prodotto è garantito 5 anni.** Sitland Spa si riserva di apportare modifiche e/o migliorie di carattere tecnico ed estetico ai propri modelli e prodotti in qualsiasi momento e senza preavviso. Le foto e i colori visualizzati sono puramente indicativi e possono variare rispetto alla realtà. Per maggiori informazioni si prega di contattare il nostro Servizio Clienti [service@sitland.com](mailto:service@sitland.com)