

sitland

Bomm



Projects

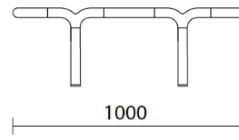
Your Workspace Showroom, Clerkenwell, United Kingdom (2023)

La Boutique du Centre Pompidou, Paris, France (2023)

Rectangular table



FRONT



SIDE



Materials and colours

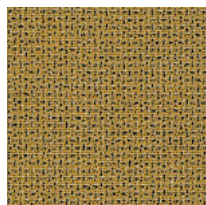
Upholsteries



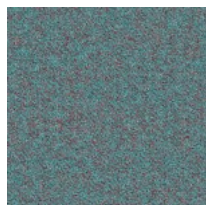
Fabric CH - Chili / Gabriel
Available colours 10



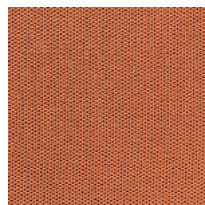
Fabric MF - Main Line Flax / Camira
Available colours 10



Fabric MW - Main Line Twist / Camira
Available colours 7



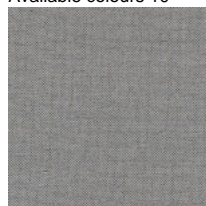
Fabric SY - Sinergy / Camira
Available colours 10



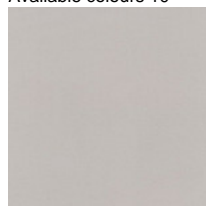
Fabric WI - Wilson / Vescom
Available colours 10



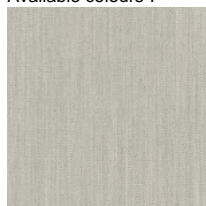
Fabric FT - Foster / Vescom
Available colours 7



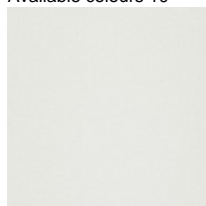
Fabric RW - Re-wool / Kvadrat
Available colours 4



Fabric HE - Hero 2 / Kvadrat
Available colours 6



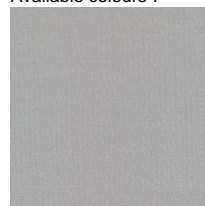
Fabric FD - Fiord 2 / Kvadrat
Available colours 7



Fabric S1 - Steelcut 3 / Kvadrat
Available colours 13



Fabric SE - Steelcut Trio 3 / Kvadrat
Available colours 15



Fabric S4 - Steelcut Quartet / Kvadrat
Available colours 5

Questo prodotto è garantito 5 anni. Sitland si riserva di apportare modifiche e/o migliorie di carattere tecnico ed estetico ai propri modelli e prodotti in qualsiasi momento e senza preavviso. Le foto e i colori visualizzati sono puramente indicativi e possono variare rispetto alla realtà. Per maggiori informazioni si prega di contattare il nostro Servizio Clienti service@sitland.com