

Cell75



Conference halls, waiting rooms, transit areas. A seat classed as comfortable has to accommodate users ergonomically and tastefully, becoming an essential and at the same time invisible support. Cell75 (Dorigo Design) is the range of small armchairs and sofas, a simplified version of the Cell128 collection, ideal for contract and large reception areas. It is available with base or legs, in wood or steel finish.

Projects

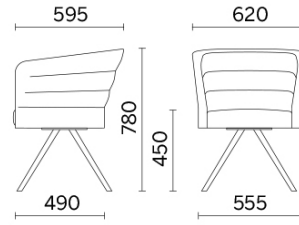
Workplace 2015, Milano, Italy (2015)

Dr Franz Scheneider SA, Spagna, Spain (2017)

Salone Internazionale del Mobile di Milano 2018, Milano, Italy (2018)

Sitland chez Gabriel, Parigi, France (2018)

Single-seater with 4 legs



Materials and colours

Upholstery



Fabric AL - Alba / FiDiVi
Available colours 10



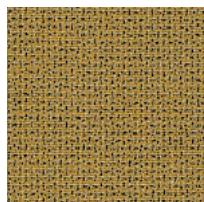
Fabric ME - Medley / Gabriel
Available colours 15



Fabric ST - Step / Gabriel
Available colours 10



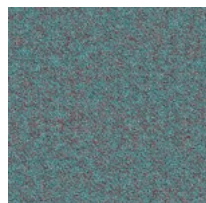
Fabric MF - Main Line Flax / Camira
Available colours 10



Fabric MW - Main Line Twist / Camira
Available colours 7



Fabric CS - Crisp / Gabriel
Available colours 10



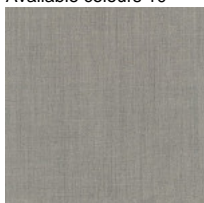
Fabric SY - Sinergy / Camira
Available colours 10



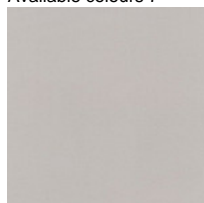
Fabric YO - Yoredale / Camira
Available colours 10



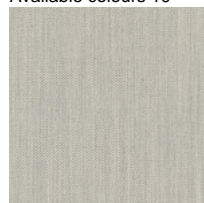
Fabric FT - Foster / Vescom
Available colours 7



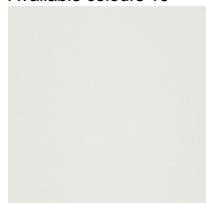
Fabric RM - Remix 3 / Kvadrat
Available colours 10



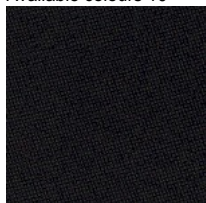
Fabric HE - Hero 2 / Kvadrat
Available colours 6



Fabric FD - Fiord 2 / Kvadrat
Available colours 7



Fabric S1 - Steelcut 3 / Kvadrat
Available colours 13



Fabric CH - Chili / Gabriel
Available colours 10



Coated fabric SC - Secret / Flukso
Available colours 3

Questo prodotto è garantito 5 anni. Sitland si riserva di apportare modifiche e/o migliorie di carattere tecnico ed estetico ai propri modelli e prodotti in qualsiasi momento e senza preavviso. Le foto e i colori visualizzati sono puramente indicativi e possono variare rispetto alla realtà. Per maggiori informazioni si prega di contattare il nostro Servizio Clienti service@sitland.com