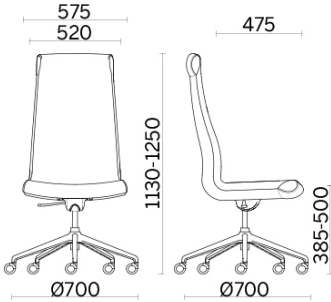


Grace



Design and design elements for possible compositions made to measure according to space and aesthetic needs. Grace, with design by Sergio Bellin, is a highly polyhedral seat, able to change style by wearing completely different legs and bases in terms of function, finish and line. Many chairs in one, with the possibility of customising colour and finish details, creating a different decor for every space.

Executive



Materials and colours

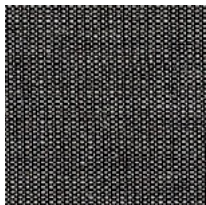
Upholstery



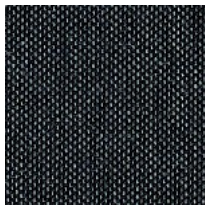
Fabric SY | Sinergy
Available colours 11



Fabric ME
Available colours 13



Fabric CN | Canvas 2
Available colours 10



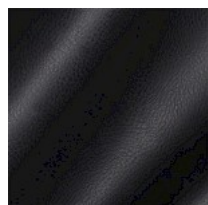
Fabric CL | Clara 2
Available colours 10



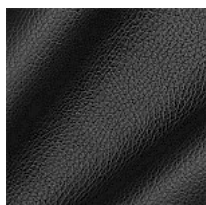
Fabric CS | Crisp
Available colours 35



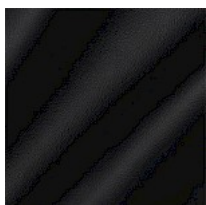
Faux leather CI
Available colours 13



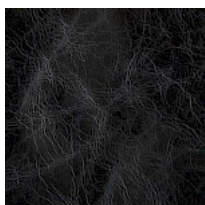
Faux leather CX
Available colours 13



Leather S + Faux leather
N
Available colours 13



Leather TS
Available colours 13



Leather TU
Available colours 4



Leather TX
Available colours 4

Questo prodotto è garantito 5 anni. Sitland Spa si riserva di apportare modifiche e/o migliorie di carattere tecnico ed estetico ai propri modelli e prodotti in qualsiasi momento e senza preavviso. Le foto e i colori visualizzati sono puramente indicativi e possono variare rispetto alla realtà. Per maggiori informazioni si prega di contattare il nostro Servizio Clienti service@sitland.com