

## Retrò

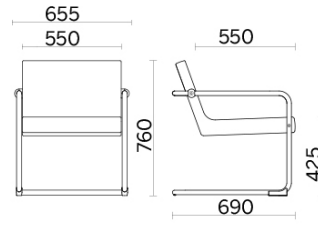


Retrò Lounge, designed by Sergio Bellin, is a supremely comfortable armchair. The resilient flexible polyurethane seat and backrest are supported by a robust internal steel structure; the copper-finish visible details are customisable. Smooth surfaces, lines with a retro vibe and fabric or luxury leather upholstery create a perfect balance of ergonomics and modern aesthetics.

### Projects

**Orgatec**, Colonia, Germany (2014)

## Lounge chair

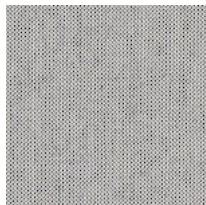


## Materials and colours

### Upholstery



Fabric CN | Canvas 2  
Available colours 10



Fabric BA | Basel  
Available colours 10



Fabric SY | Sinergy  
Available colours 11



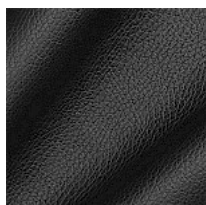
Fabric MY | Memory 2  
Available colours 8



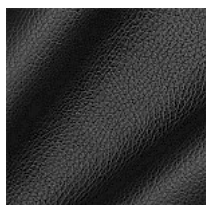
Fabric ME  
Available colours 13



Fabric CO | Coda 2  
Available colours 7



Leather S + Faux leather N  
Available colours 13



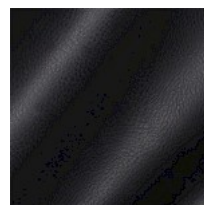
Leather S  
Available colours 13



Leather TU  
Available colours 4



Leather TX  
Available colours 4



Faux leather CI  
Available colours 13

**Questo prodotto è garantito 5 anni.** Sitland Spa si riserva di apportare modifiche e/o migliorie di carattere tecnico ed estetico ai propri modelli e prodotti in qualsiasi momento e senza preavviso. Le foto e i colori visualizzati sono puramente indicativi e possono variare rispetto alla realtà. Per maggiori informazioni si prega di contattare il nostro Servizio Clienti [service@sitland.com](mailto:service@sitland.com)