

Path



Path, designed by Dorigo Design, is an innovative system of modular sofas, consisting of four modules, either straight, convex and concave, which can be teamed together in endless composition possibilities, to furnish any type of space with creativity and original freedom. The internal steel structure features springs and elastic belts for guaranteed comfort and durability. The upholstery is available in leather, eco-leather or fabric, in a host of different colours.

Projects

WBF, Milano, Italy (2013)

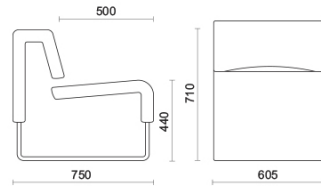
VimpelCom, Mosca, Russia (2011)

Bard College, New York, United States (2017)

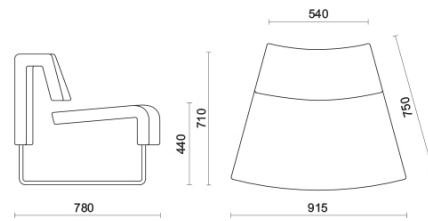
Vilnius Bankas, Vilnius, Lithuania (2011)

Models

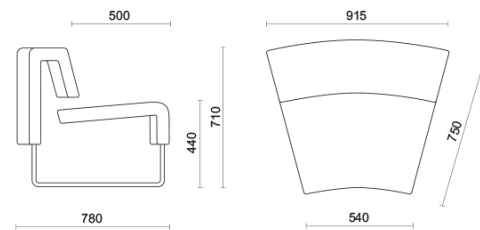
1 seater
modular unit



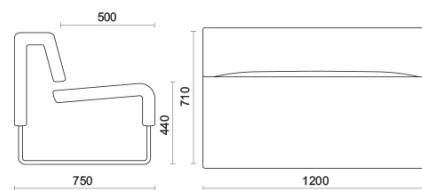
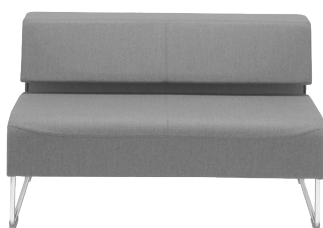
1 seater
modular unit -
convex



1 seater
modular unit -
concave

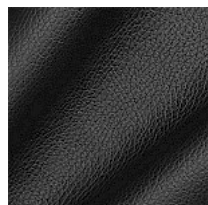


2 seater
modular unit
standard

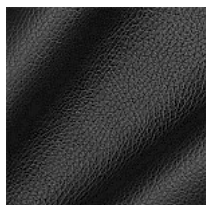


Materials and colours

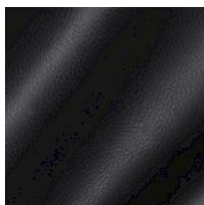
Upholstery



Leather S + Faux leather N
Available colours 13



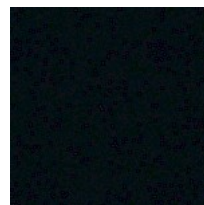
Faux leather N
Available colours 13



Faux leather CX
Available colours 13



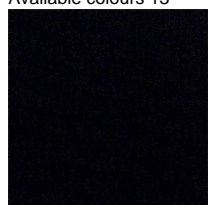
Faux leather CI
Available colours 13



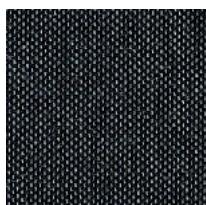
Fabric SY | Sinergy
Available colours 11



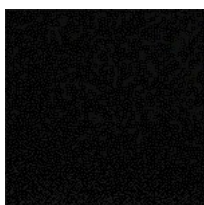
Fabric ME
Available colours 13



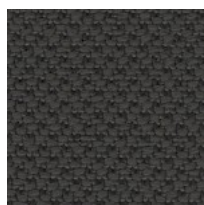
Fabric IP
Available colours 13



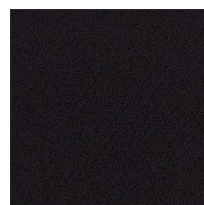
Fabric CL | Clara 2
Available colours 10



Fabric BN
Available colours 10



Fabric AL | Alba
Available colours 9



Fabric AB
Available colours 13

Questo prodotto è garantito 5 anni. Sitland Spa si riserva di apportare modifiche e/o migliorie di carattere tecnico ed estetico ai propri modelli e prodotti in qualsiasi momento e senza preavviso. Le foto e i colori visualizzati sono puramente indicativi e possono variare rispetto alla realtà. Per maggiori informazioni si prega di contattare il nostro Servizio Clienti service@sitland.com