

Passe-partout



Passe-partout, designed by Sergio Bellin, is a collection of seats that meets all comfort and styling requirements, for all sorts of settings. This adaptable piece of furniture can be customised with a broad range of fine upholsteries. Passe-partout is available in the sled-base visitor and meeting versions.

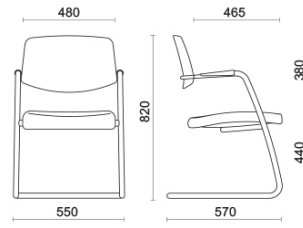
Projects

Avaya, Budapest, Hungary (2014)

BCC Sant'Elena, Padova, Italy (2013)

Vittoria Assicurazioni, Catania, Italy (2019)

Sled visitor structure medium back



Materials and colours

Upholstery



Coated fabric NX
Available colours 11



Coated fabric NX
Available colours 1



Leather SX + Coated
fabric NX
Available colours 12



Leather SX - Box Land /
Dani
Available colours 12



Fabric AL - Alba / FiDiVi
Available colours 10



Fabric BN - Bondai /
FiDiVi
Available colours 10



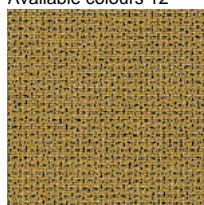
Fabric AB - Xtreme Plus
/ Camira
Available colours 10



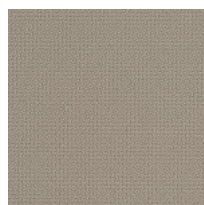
Fabric ME - Medley /
Gabriel
Available colours 15



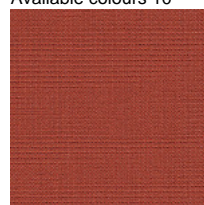
Fabric MF - Main Line
Flax / Camira
Available colours 10



Fabric MW - Main Line
Twist / Camira
Available colours 7



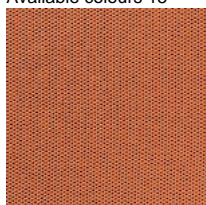
Fabric ST - Step /
Gabriel
Available colours 10



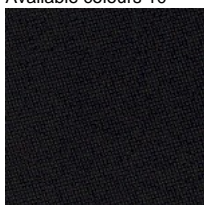
Fabric CS - Crisp /
Gabriel
Available colours 10



Fabric SY - Sinergy /
Camira
Available colours 10



Fabric WI - Wilson /
Vescom
Available colours 10



Fabric CH - Chili /
Gabriel
Available colours 10

Questo prodotto è garantito 5 anni. Sitland si riserva di apportare modifiche e/o migliorie di carattere tecnico ed estetico ai propri modelli e prodotti in qualsiasi momento e senza preavviso. Le foto e i colori visualizzati sono puramente indicativi e possono variare rispetto alla realtà. Per maggiori informazioni si prega di contattare il nostro Servizio Clienti service@sitland.com