

## Classic +



The Classic + collection furnishes the office space with high-backed executive seating, managerial and meeting seating with fixed feet and stools, featuring an understated design and luxury covers, with a choice of eight catalogue finishes, fabric and leather, in numerous colour versions. The frame, in chromed steel or matte black coated, also has a base with five spokes available in matte black aluminium and gloss aluminium finishes.

### Projects

**Paul's Barkleys**, London, United Kingdom (2011)

**Silver Sea**, London, United Kingdom (2011)

**Center of Reproductive Medicine and IVF**, Sofia, Bulgaria (2012)

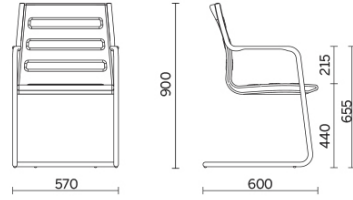
**Stockholm Furniture Fair**, Stoccolma, Sweden (2012)

**Cellnex**, Sweden, Sweden (2022)

**Team Olivia**, Sweden, Sweden (2022)

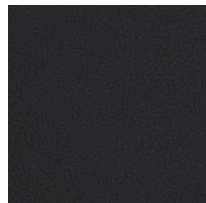
**Refin Studio**, Milan, Italy (2023)

## Sled base visitor chair



## Materials and colours

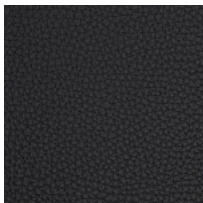
### Upholstery



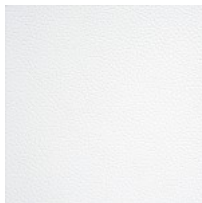
Leather TS - Florida /  
Dani  
Available colours 10



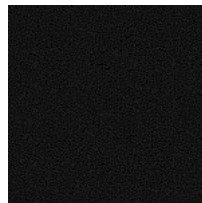
Coated fabric NX  
Available colours 1



Leather SX + Coated  
fabric NX  
Available colours 12



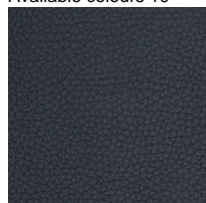
Leather PA - Panama /  
Dani  
Available colours 10



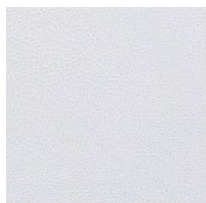
Fabric SY - Sinergy /  
Camira  
Available colours 6



Fabric ME - Medley /  
Gabriel  
Available colours 13



Coated fabric NX  
Available colours 11



Coated fabric SC -  
Secret / Flukso  
Available colours 10

**Questo prodotto è garantito 5 anni.** Sitland si riserva di apportare modifiche e/o migliorie di carattere tecnico ed estetico ai propri modelli e prodotti in qualsiasi momento e senza preavviso. Le foto e i colori visualizzati sono puramente indicativi e possono variare rispetto alla realtà. Per maggiori informazioni si prega di contattare il nostro Servizio Clienti [service@sitland.com](mailto:service@sitland.com)