

Line

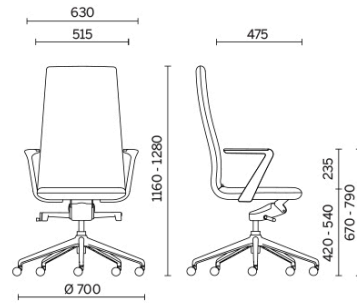


A sophisticated and linear aesthetic personality and an efficient and custom range of functions. Line is the collection of executive, managerial and meeting seats, with elegant cantilevered armrests and ultra-slim seat with distinctive design, embellished by upholstery in luxury finishes, in plain version or featuring horizontal stitching. Line is available with different types of mechanism and in the sled and stool versions.

Projects

South, Hunsfos Næringspark, Norway (2018)

Executive



Materials and colours

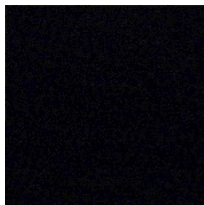
Upholstery



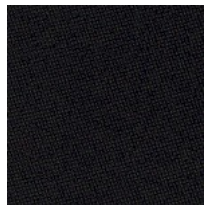
Fabric SY - Sinergy /
Camira
Available colours 6



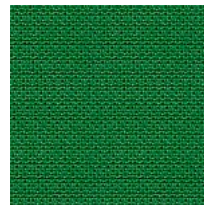
Fabric ME - Medley /
Gabriel
Available colours 13



Fabric IP - Ipanema D /
Pugi
Available colours 11



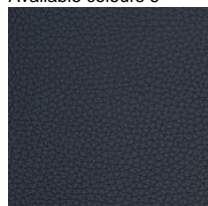
Fabric CH - Chili /
Gabriel
Available colours 13



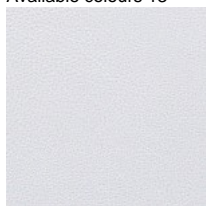
Fabric AV - Active Plus
Available colours 10



Fabric CS - Crisp /
Gabriel
Available colours 13



Coated fabric NX
Available colours 11



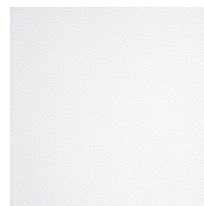
Coated fabric SC -
Secret / Flukso
Available colours 12



Coated fabric NX
Available colours 1



Leather SX + Coated
fabric NX
Available colours 12



Leather PA - Panama /
Dani
Available colours 13

Questo prodotto è garantito 5 anni. Sitland Spa si riserva di apportare modifiche e/o migliorie di carattere tecnico ed estetico ai propri modelli e prodotti in qualsiasi momento e senza preavviso. Le foto e i colori visualizzati sono puramente indicativi e possono variare rispetto alla realtà. Per maggiori informazioni si prega di contattare il nostro Servizio Clienti service@sitland.com