



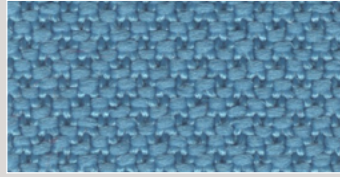
AL — Tessuto Fabric FiDiVi, Alba

Composizione: 100% Poliestere. Peso: 450 g/ml. Reazione al fuoco: UNI 9175 Classe 1IM, EN 1021-1 cigarette, EN 1021-2 match, Crib 5 (BS 5852 part II), BS 7176 Medium Hazard, US California Technical Bulletin 117-2013. Resistenza all'abrasione: ISO 12947-2, 100.000 cicli Martindale. Pilling: EN ISO 12945-2:5. Resistenza dei colori alla luce: ISO 105-B02, 6 (scala dei blu). Solidità dei colori allo sfregamento: ISO 105-X12, 4/5 (scala dei grigi).

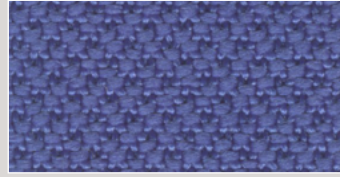
Composition: 100% Polyester. Weight: 450 g/m. Flammability: EN 1021-1 cigarette, EN 1021-2 match, Crib 5 (BS 5852 part II), BS 7176 Medium Hazard, UNI 9175 Class 1IM, US California Technical Bulletin 117-2013. Abrasion resistance: ISO 12947-2, 100.000 Martindale cycles. Pilling: EN ISO 12945-2:5. Colour fastness to light: ISO 105-B02, 6 (blue scale). Colour fastness to rubbing: ISO 105-X12, 4/5 (grey scale).



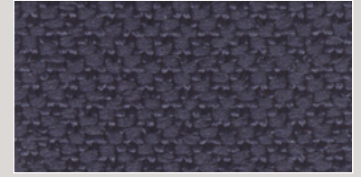
AL07_Alba4027



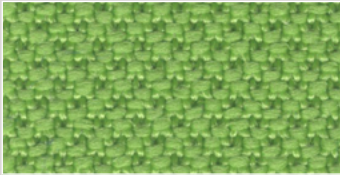
AL09_Alba6007



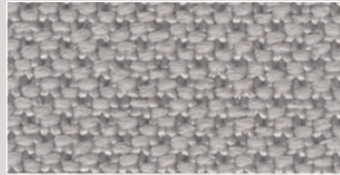
AL06_Alba6071



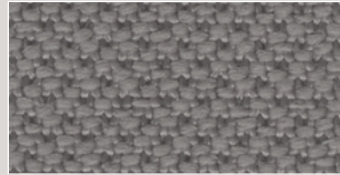
AL05_Alba6098



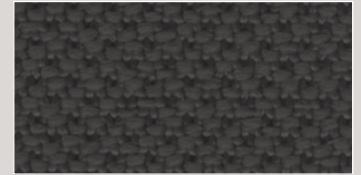
AL04_Alba7013



AL03_Alba8078



AL02_Alba8003



AL01_Alba8033



AL08_Alba1011