

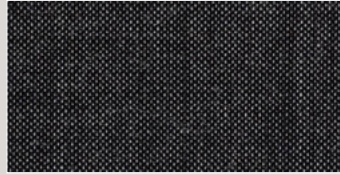
Designer: Herzog & de Meuron. Composizione: sofisticato tessuto, 90% Lana vergine pettinata, 10% Nylon. Peso: 510g/metro lineare. Reazione al fuoco: UNI 9175 Classe 1IM, AS/NZS 3837, class 2, BS 5852 Crib 5 con trattamento, BS 5852 part 1, DIN 4102 B2, EN 1021-1/2, IMO FTP Code 2010 Part 8, NF D 60 013, NFPA 260, ÖNORM B1/ Q1, US California Technical Bulletin 117-2013. Abrasione: EN ISO 12947 50.000 cicli Martindale. Pilling: EN ISO 12945: 4. Solidità alla luce: ISO 105-B02:6-7. Colore: può verificarsi una leggera differenza. Test ambientali: fibre naturali / risorsa sostenibile. 100% senza metalli pesanti, conforme alla norma ETAD.

BA — Tessuto Fabric Kvadrat, Basel

Designer: Herzog & de Meuron. Composizione: sophisticated fabric, 90% New wool worsted, 10% Nylon. Weight: 510 g/lm. Flammability AS/NZS 3837, class 2, BS 5852 Crib 5 with treatment, BS 5852 part 1, DIN 4102 B2, EN 1021-1/2, IMO FTP Code 2010 Part 8, NF D 60 013, NFPA 260, ÖNORM B1/ Q1, UNI 9175 Classe 1IM, US California Technical Bulletin 117-2013. Abrasion: EN ISO 12947 50.000 Martindale cycles. Pilling: EN ISO 12945:4. Colour fastness to light: ISO 105-B02:6-7. Colour: slight difference may occur. Environment: natural fibres / sustainable resource, 100% free of heavy metals, complies with ETAD norm.



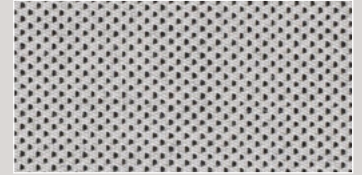
BA10_Basel183



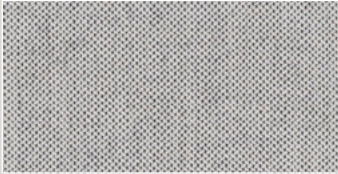
BA06_Basel186



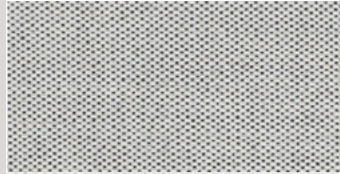
BA02_Basel181



BA09_Basel123



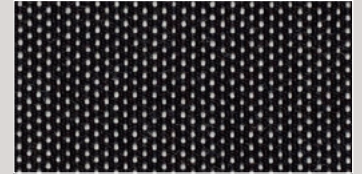
BA05_Basel126



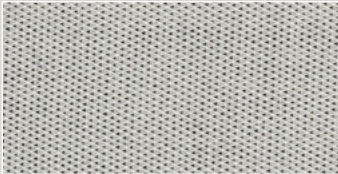
BA01_Basel121



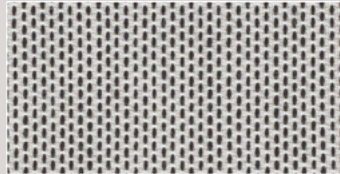
BA08_Basel187



BA04_Basel189



BA07_Basel127



BA03_Basel129