



CI — Ecopelle Ecological leather

CI Composizione: 79% PVC, 9% Poliuretano, 8% Poliestere, 4% Cotone. Peso 882 g/ml ($\pm 10\%$). Spessore: 1.1 mm. Reazione al fuoco: UNI 9175: Classe 1IM. Resistenza alla luce UV Xenotest Alpha: ≥ 4 scala dei grigi - Metodo di abrasione "Cesconi" - UNI 4818 74-15° (resistente). Test ambientali: REACH Regulation (Regulation EC 1907/2006), 100% senza ftalati.

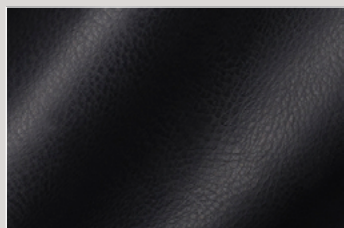
CI Composition: 79% PVC, 9% Polyurethane, 8% Polyester, 4% Cotton. Weight 882 g/lm ($\pm 10\%$). Thickness: 1.1 mm. UV light resistance Xenotest Alpha: ≥ 4 gray scale - Abrasion method "Cesconi" - UNI 4818 74-15° (resistant). Flammability: UNI 9175 Class 1 IM. Environment: REACH Regulation (Regulation EC 1907/2006), 100% free of phthalates.



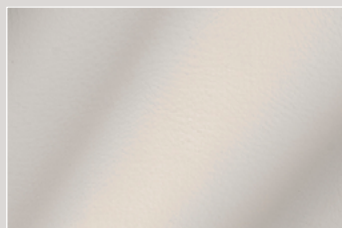
CX — Ecopelle Ecological leather

CX Composizione: 79% PVC, 9% Poliuretano, 8% Poliestere, 4% Cotone. Peso 882 g/ml ($\pm 10\%$). Spessore: 1.1 mm. Resistenza alla luce UV Xenotest Alpha: ≥ 4 scala dei grigi - Metodo di abrasione "Cesconi" - UNI 4818 74-15° (resistente). Test ambientali: REACH Regulation (Regulation EC 1907/2006), 100% senza ftalati. Non usare solventi, candeggine e detersivi chimici o spray per lucidare. Non utilizzare detersivi che contengano alcool e/o ammoniaca o detersivi aggressivi che possono danneggiare nel tempo l'aspetto e la tenuta del tessuto ecopelle.

CX Composition: 79% PVC, 9% Polyurethane, 8% Polyester, 4% Cotton. Weight 882 g/lm ($\pm 10\%$). Thickness: 1.1 mm. UV light resistance Xenotest Alpha: ≥ 4 gray scale - Abrasion method "Cesconi" - UNI 4818 74-15° (resistant). Environment: REACH Regulation (Regulation EC 1907/2006), 100% free of phthalates. For a routine cleaning wipe with a soft cloth lightly dampened with mild soap. Do not use solvents, bleach, chemical detergents or spray. Do not use aggressive detergents that can damage during the time the aspect and the endurance of the ecological leather.



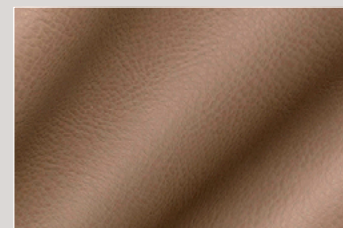
CI_CX01



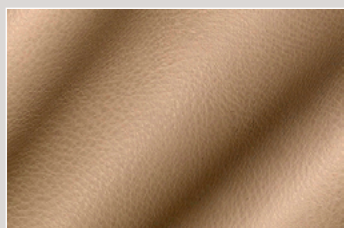
CI_CX02



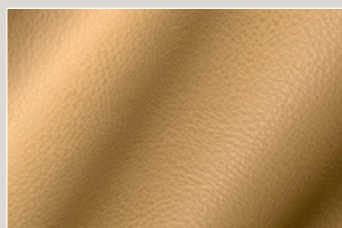
CI_CX03



CI_CX05



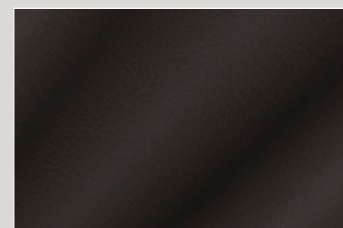
CI_CX06



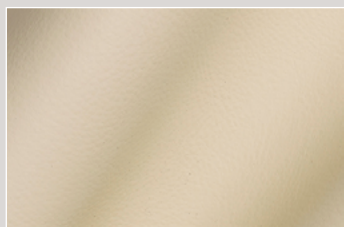
CI_CX07



CI_CX08



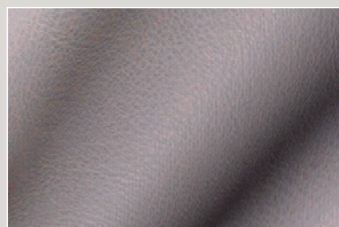
CI_CX13



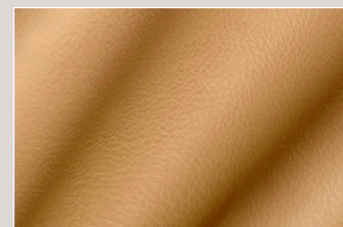
CI_CX15



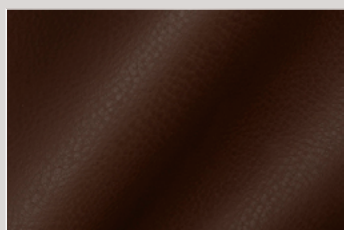
CI_CX17



CI_CX19



CI_CX25



CI_CX22