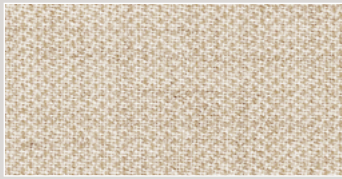




## CL — Tessuto Fabric Kvadrat, Clara 2

Designer: Anne Birgitte Hansen. Composizione: tessuto fresco e raffinato, 92% Lana vergine pettinata, 8% Nylon. Peso: 400 g/ml. Reazione al fuoco: UNI 9175 Classe 1IM, AS/NZS 3837, BS 5852 Crib 5 con trattamento, BS 5852 part 1, DIN 4102 B2, EN 1021-1/2, IMO FTP Code 2010 Part 8, NF D 60 013, NFPA 260, ÖNORM B1/ Q1, US California Technical Bulletin 117-2013. Abrasione: EN ISO 12947: 80.000 cicli Martindale. Pilling: EN ISO 12945:4. Solidità dei colori alla luce: ISO 105-B02: 6. Colore: può verificarsi una leggera differenza. Test ambientali: conforme a EU ecolabel "The Flower". 100% senza metalli pesanti.

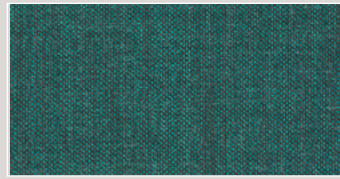
Designer: Anne Birgitte Hansen. Composition: fresh yet refined fabric, 92% New wool worsted, 8% Nylon. Weight: 400 g/m. Flammability: AS/NZS 3837, BS 5852 Crib 5 with treatment, BS 5852 part 1, DIN 4102 B2, EN 1021-1/2, IMO FTP Code 2010 Part 8, NF D 60 013, NFPA 260, ÖNORM B1/ Q1, UNI 9175 Classe 1IM, US California Technical Bulletin 117-2013. Abrasion: EN ISO 12947: 80.000 Martindale cycles. Pilling: EN ISO 12945: 4. Colour fastness to light: ISO 105-B02: 6. Colour: slight difference may occur. Environment: complies with EU ecolabel "The Flower". 100% free of heavy metals.



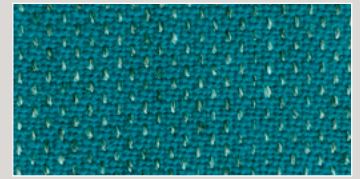
CL07\_Clara2.244



CL08\_Clara2.248



CL09\_Clara2.884



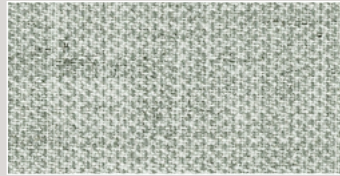
CL10\_Clara2.888



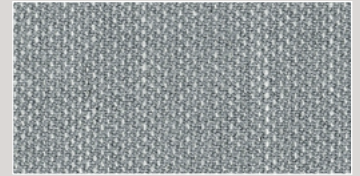
CL03\_Clara2.987



CL04\_Clara2.983



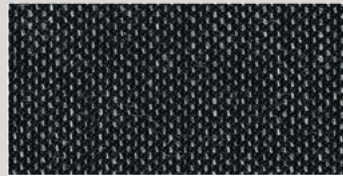
CL05\_Clara2.144



CL06\_Clara2.148



CL02\_Clara2.184



CL01\_Clara2.188