



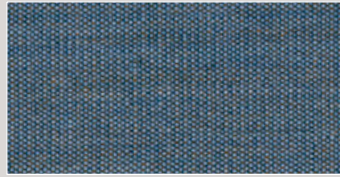
## CN — Tessuto Fabric Kvadrat, Canvas 2

Designer: Giulio Ridolfo. Composizione: 90% Lana vergine pettinata, 10% Nylon. Peso: 480 g/ml. Reazione al fuoco: UNI 9175 Classe 1IM, AS/NZS 1530.3, BS 5852 Crib 5 con trattamento, BS 5852 part 1, DIN 4102 B2, EN 1021-1/2, IMO FTP Code 2010 Part 8, NF D 60 013, NFPA 260, ÖNORM B1/ Q1, SN 198 898 5.3 con trattamento, US California Technical Bulletin 117-2013. Abrasione: EN ISO 12947 100.000 cicli Martindale. Pilling: EN ISO 12945:4-5. Solidità dei colori alla luce: ISO 105-B02:6. Colore: può verificarsi una leggera differenza. Test ambientali: conforme a EU ecolabel "The Flower". 100% senza metalli pesanti, conforme alla norma ETAD.

Designer: Giulio Ridolfo. Composizione: 90% New wool worsted, 10% Nylon. Weight: 480 g/lm. Flammability: AS/NZS 1530.3, BS 5852 Crib 5 with treatment, BS 5852 part 1, DIN 4102 B2, EN 1021-1/2, IMO FTP Code 2010 Part 8, NF D 60 013, NFPA 260, ÖNORM B1/ Q1, SN 198 898 5.3 with treatment, UNI 9175 Classe 1IM, US California Technical Bulletin 117-2013. Abrasion: EN ISO 12947: 100.000 Martindale cycles. Pilling: EN ISO 12945:4-5. Colour fastness to light: ISO 105-B02:6. Colour: slight difference may occur. Environment: complies with EU ecolabel "The Flower", 100% free of heavy metals, complies with ETAD norm.



CN09\_Canvas2.454



CN08\_Canvas2.734



CN07\_Canvas2.794



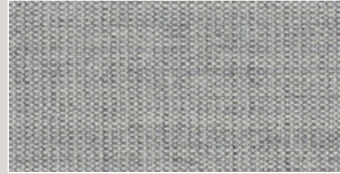
CN06\_Canvas2.746



CN05\_Canvas2.216



CN04\_Canvas2.114



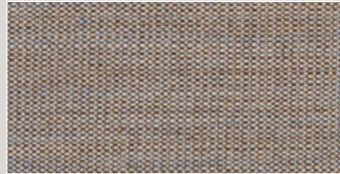
CN03\_Canvas2.124



CN02\_Canvas2.134



CN01\_Canvas2.174



CN10\_Canvas2.244