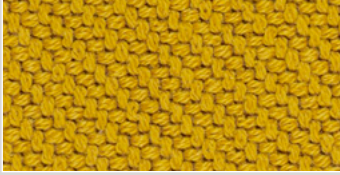


Designer: Norway Says & Per Bjørnsen. Composizione: tessuto pregiato con caratteristica tridimensionale, 90% Lana vergine, 10% Nylon. Peso: 860 g/ml. Reazione al fuoco: UNI 9175 Classe 1IM, AS/NZS 1530.3, BS 5852 Crib 5 con trattamento, BS 5852 part 1, DIN 4102 B2, EN 1021-1/2, IMO FTP Code 2010 Part 8, NF D 60 013, NFPA 260, ÖNORM B1/ Q1, SN 198 898 5.3 con trattamento, US California Technical Bulletin 117-2013. Abrasione: EN ISO 12947:100.000 cicli Martindale. Pilling: EN ISO 12945: 4. Solidità dei colori alla luce: ISO 105-B02: 6-7. Colore: può verificarsi una leggera differenza. Test ambientali: Fibre naturali / Risorsa sostenibile. 100% senza metalli pesanti, è conforme alla norma ETAD. È conforme al regolamento REACH.

CO — Tessuto Fabric Kvadrat, Coda 2

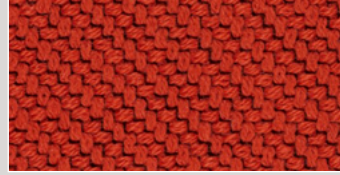
Designer: Norway Says & Per Bjørnsen. Composition: fine fabric with three-dimensional expression, 90% New wool, 10% Nylon. Weight: 860 g/lm. Flammability: AS/NZS 1530.3, BS 5852 Crib 5 with treatment, BS 5852 part 1, DIN 4102 B2, EN 1021-1/2, IMO FTP Code 2010 Part 8, NF D 60 013, NFPA 260, ÖNORM B1/ Q1, SN 198 898 5.3 with treatment, UNI 9175 Classe 1IM, US California Technical Bulletin 117-2013. Abrasion: EN ISO 12947:100.000 Martindale cycles, Pilling: EN ISO 12945: 4. Colour fastness to light: ISO 105-B02: 6-7. Colour: slight difference may occur. Environment: natural fibres / Sustainable resource. 100% free of heavy metals, complies with ETAD norm. Complies with REACH regulation.



CO09_Coda2.442



CO12_Coda2.182



CO06_Coda2.610



CO10_Coda2.242



CO14_Coda2.382



CO11_Coda2.103



CO08_Coda2.762