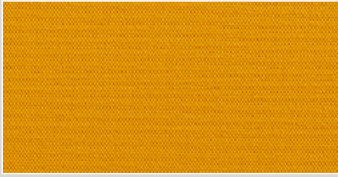




IP – Tessuto Fabric Pugi, Ipanema

Composizione: tessuto stretch 100% Poliestere FR - Trevira CS, realizzato con coloranti non metallici. Peso: 480 g/ml. Reazione al fuoco: UNI 9175 Classe 1IM, B1 DIN 4102, BS 5852 Crib 5 usando una schiuma CM 35 kg/cu.m, EN 1021 Part.1-2 usando una schiuma CM 35 kg/cu.m, US California Technical Bulletin 117-2013, EN 13501-1:B-s1, d0, EN 13773 class 1, IMO 688 (17). Abrasione: UNI EN ISO 12497:2000 50.000 cicli Martindale, ffl 20%. Stabilità del colore alla luce: UNI EN ISO 105-B02:5. Solidità dei colori allo sfregamento: EN ISO 105x12:4 (secco/bagnato).

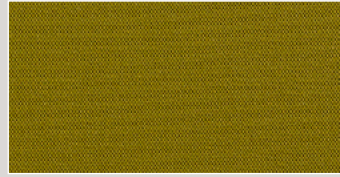
Composition: stretch fabric 100% Polyester FR - Trevira CS, non metallic dyestuffs. Weight: 480 g/lm. Flammability: UNI 9175 Classe 1IM, B1 DIN 4102, BS 5852 Crib 5 using a CM Foam 35 kg/cu.m, EN 1021 Part.1-2 using a CM Foam 35 kg/cu.m, US California Technical Bulletin 117-2013, EN 13501-1:B-s1, d0, EN 13773 Burning Behaviour: class 1, IMO 688 (17) -. Abrasion: UNI EN ISO 12497:2000 50.000 Martindale rubs ffl 20%. Colour fastness to light: UNI EN ISO 105-B02:5. Colour fastness to rubbing: EN ISO 105x12:4 (dry/wet).



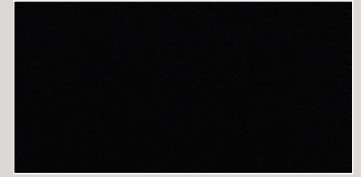
IP08_Ipanema D58



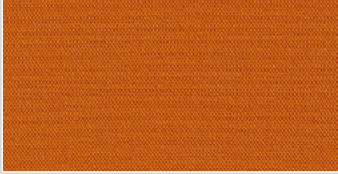
IP17



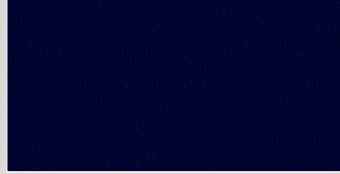
IP 11_IpanemaD455



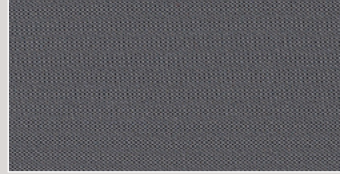
IP01_IpanemaD651



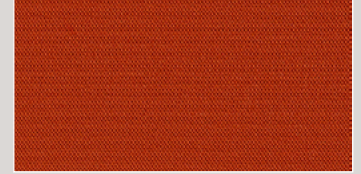
IP07_IpanemaD110



IP02_IpanemaD307



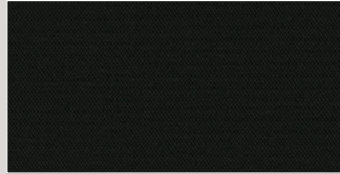
IP13



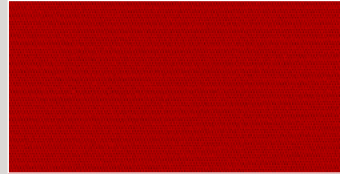
IP16



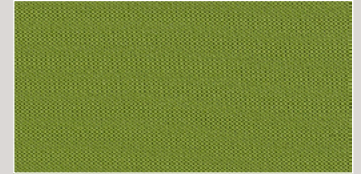
IP18



IP05_IpanemaD626



IP09_IpanemaD203



IP15



IP12