

## N — Ecopelle Ecological leather

Composizione: Ecopelle 80% PVC, 20% Poliestere. Peso: 770 g/ml. Resistenza alla trazione UNI EN ISO 1421-1: longitudinale  $\geq 300$ , trasversale  $\geq 170$ . Allungamento a rottura UNI EN ISO 1421-1: longitudinale  $\geq 75$ , trasversale  $\geq 160$ . I colori dell'eco-pelle N si abbinano ai corrispondenti colori della vera pelle S. Resistente all'uso, facilmente pulibile con acqua e sapone neutro. Non usare solventi, candeggine e detersivi chimici o spray per lucidare. Non utilizzare detersivi che contengano alcool e/o ammoniaca o detersivi aggressivi che possono danneggiare nel tempo l'aspetto e la tenuta del tessuto ecopelle.

Composition: Ecological leather 80% PVC, 20% Polyester. Weight: 770 g/lm. Tensile strength UNI EN ISO 1421-1: lengthwise  $\geq 300$ , crosswise  $\geq 170$ . Elongation strength UNI EN ISO 1421-1: lengthwise  $\geq 75$ , crosswise  $\geq 160$ . The colours of the N faux-leather match the corresponding colours of the genuine S leather. The eco-leather is wear-resistant and easy to clean with mild soap and water. For a routine cleaning wipe with a soft cloth lightly dampened with mild soap. Do not use solvents, bleach, chemical detergents or spray. Do not use aggressive detergents that can damage during the time the aspect and the endurance of the ecological leather.



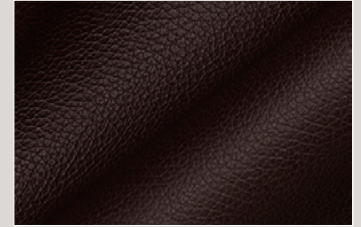
N01



N12



N15



N22



N23



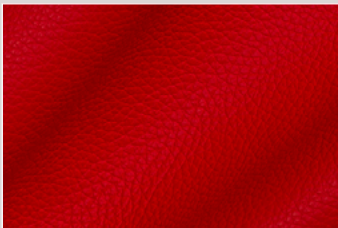
N27



N28



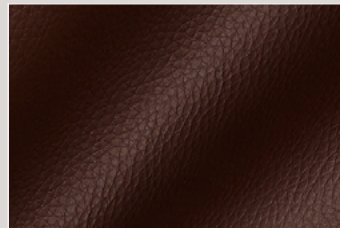
N29



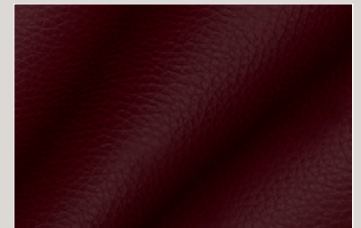
N30



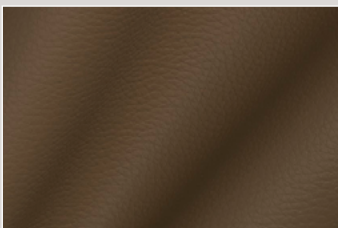
N32



N33



N34



N36