



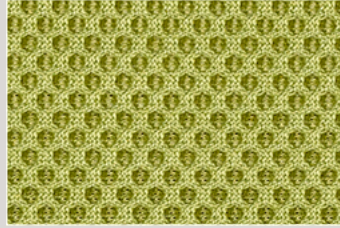
RR — Rete Mesh Gabriel, Runner

Designer: Inger Mosholt Nielsen. Composition: 100% Poliestere. Peso: 510 g/ml. Reazione al fuoco: UNI 9175 Class 1M, BS EN 1021-1 cigarette, BS EN 1021-2 Match, US California Technical Bulletin 117-2013. Abrasione: EN ISO 12947-2: 70.000 cicli Martindale. Pilling: EN ISO 12945-2: 5. Stabilità del colore alla luce: EN ISO 105-B02: 5-7. Solidità dei colori allo sfregamento: EN ISO 105x12(bagnato/asciutto): 4-5. Test acustico resistenza al flusso d'aria: EN 29053. Test assorbimento acustico: ISO 354. Colore: può verificarsi una leggera differenza. Test ambientali: Oeko Tex: 100% senza metalli pesanti. Aspirare regolarmente. Piccole macchie e/o aloni si possono pulire con un panno leggermente umido e pochissimo sapone neutro. Lasciare asciugare naturalmente, non sfregare. Non utilizzare detersivi che contengano alcool e/o ammoniaca o detersivi aggressivi che possono danneggiare nel tempo l'aspetto e la tenuta del tessuto a rete.

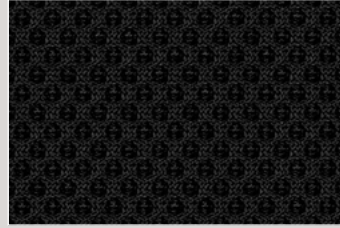
Designer: Inger Mosholt Nielsen. Composition: 100% Polyester. Weight: 510 g/m. Flammability: BS EN 1021-1 cigarette, BS EN 1021-2 Match, US California Technical Bulletin 117-2013, UNI 9175 Class 1M. Abrasion: EN ISO 12947-2: 70.000 Martindale cycles. Pilling: EN ISO 12945-2:5. Colour fastness to light: EN ISO 105-B02: 5-7. Colour fastness to rubbing: EN ISO 105x12 (wet/dry): 4-5. Acoustic test air flow resistance: EN 29053. Acoustic test sound absorption: ISO 354. Colour: slight difference may occur. Environment Oeko Tex: 100% free of heavy metals. US Act: AATCC 16 Colour fastness to light; AATCC 8 or 116 Wet/dry crocking; ASTM D3511 Pilling; ASTM D4157-07 Wyz abrasion (heavy duty); CA TB 117-2013. Vacuum clean regularly; small spots and/or stains can be cleaned with a damp cloth and a very small amount of mild soap. Allow to dry naturally, do not rub. Do not use cleaning agents that contain alcohol and/or ammoniac or aggressive detergents that can damage the appearance and the tightness of the mesh fabric over time.



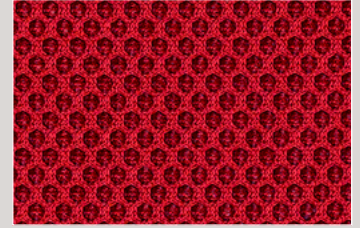
RR06_Runner63034



RR05_Runner68056



RR01_Runner60999



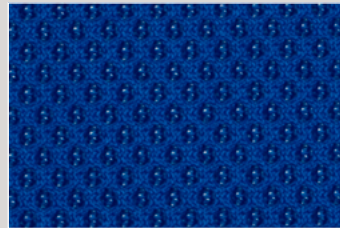
RR07_Runner64089



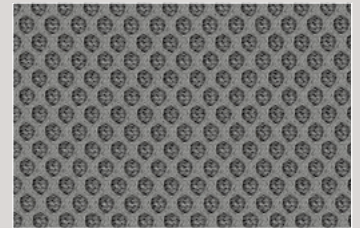
RR14_Runner60165



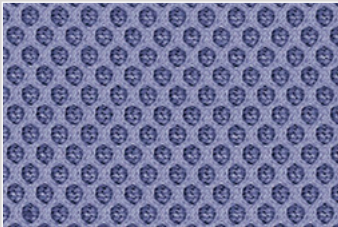
RR04_Runner60061



RR10_Runner66120



RR03_Runner60011



RR09_Runner65078



RR02_Runner60025