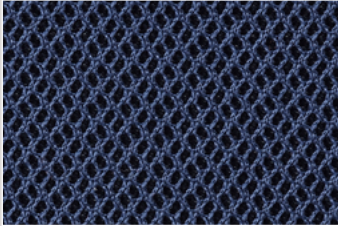




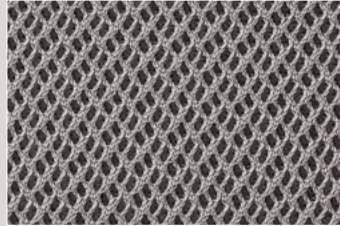
## **RY – Rete** **Mesh** **Gabriel, Rhythm**

Designer: Gabriel Design Team. Composizione: 100% Poliestere ignifugo. Peso: 525 g/ml. Reazione al fuoco: UNI 9174 Classe Uno - UNI 8457, BS EN 1021-1 cigarette, BS EN 1021-2 Match, BS 5852 Part 1 0, 1 Cigarette & match, BS 5852 Crib 5, BS 7176 Medium hazard, DIN 4102 B1, NF P 92-503 M3, US California Technical Bulletin 117-2013. ASTM D4157-07. Abrasione: EN ISO 12947-2: 70.000 cicli Martindale; ASTM D4157-07 Rivestimenti Heavy duty; doppi cicli 100.000. Pilling: EN ISO 12945-2: 5. Stabilità del colore alla luce: EN ISO 105-B02: 5-7. Solidità dei colori allo sfregamento: EN ISO 105x12 (bagnato/secco): 4-5. Colore: può verificarsi una leggera differenza. Test ambientali: Oeko Tex, 100% senza metalli pesanti. Aspirare regolarmente. Piccole macchie e/o aloni si possono pulire con un panno leggermente umido e pochissimo sapone neutro. Lasciare asciugare naturalmente, non sfregare. Non utilizzare detergenti che contengano alcool e/o ammoniaca o detergenti aggressivi che possono danneggiare nel tempo l'aspetto e la tenuta del tessuto a rete.

Designer: Gabriel Design Team. Composizione: 100% Polyester flame retardant. Weight: 525 g/lm. Flammability: BS EN 1021-1 cigarette, BS EN 1021-2 Match, BS 5852 Part 1 0, 1 Cigarette & match, BS 5852 Crib 5, BS 7176 Medium hazard, DIN 4102 B1, NF P 92-503 M3, UNI 9174 Classe Uno - UNI 8457, US California Technical Bulletin 117-2013. Abrasion: EN ISO 12947-2:70.000 Martindale cycles. Pilling: EN ISO 12945-2: 5. Colour fastness to light: EN ISO 105-B02: 5-7. Colour fastness to rubbing: EN ISO 105x12 (wet/dry): 4-5. Colour: slight difference may occur. Environment: Oeko Tex, 100% free of heavy metals. US Act: AATCC 16 Colour fastness to light; AATCC 8 or 116 Wet/dry crocking; AATCC 15 Perspiration; ASTM D3511 Pilling; ASTM D4034 Yarn slippage at a sewn seam; ASTM D5034 Breaking force; ASTM D4157-07 Wyz abrasion (heavy duty); CA TB 117-2013. Vacuum clean regularly; small spots and/or stains can be cleaned with a damp cloth and a very small amount of mild soap. Allow to dry naturally, do not rub. Do not use cleaning agents that contain alcohol and/or ammoniac or aggressive detergents that can damage the appearance and the tightness of the mesh fabric over time.



RY04\_Rhythm66138



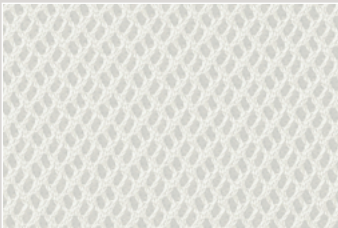
RY03\_Rhythm60165



RY02\_Rhythm60025



RY01\_Rhythm60999



RY05\_Rhythm60000