



ISO 14025 EPD



# S — Pelle Leather Dani

Composizione: vera pelle bovina rettificata, pigmentata e smerigliata di origine Europea. Colori solidi e resistenti. Reazione al fuoco: UNI EN 1021 - 1&2 (mancata accensione). Stabilità del colore alla luce: UNI EN ISO 105-B02 ≥ 6. Solidità dei colori allo sfregamento: UNI EN ISO 11640 ≥ 4 (secco/bagnato). La pelle S è certificata EPD, è certificata "Pelle italiana full cycle" per una produzione interamente realizzata in Italia ed è un prodotto Carbon Footprint ISO/TS 14067: 2013.

Composition: buffed and pigmented real leather from European hides, solid and durable colours. Flammability: UNI EN 1021 - 1&2 (no ignition). Colour fastness to light: UNI EN ISO 105-B02 ≥ 6. Colour fastness to rubbing: UNI EN ISO 11640 ≥ 4 (dry/wet). The S leather is certified EPD, it's labelled "Italian origin of leather-full cycle", it's a product Carbon Footprint ISO/TS 14067: 2013; it's a product labelled RAL-GZ 430/4 by Deutsche Gütegemeinschaft Möbel ass. and labelled "Der Blaue Engel" by RAL GmbH.



S01



S12



S15



S22



S23



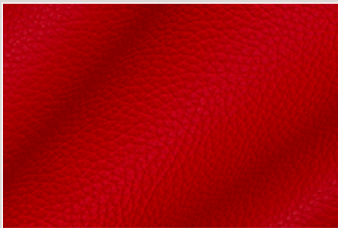
S27



S28



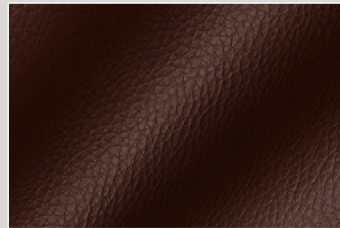
S29



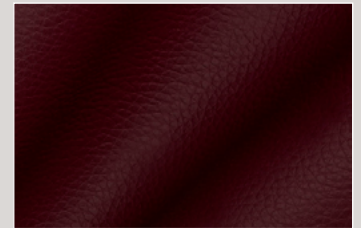
S30



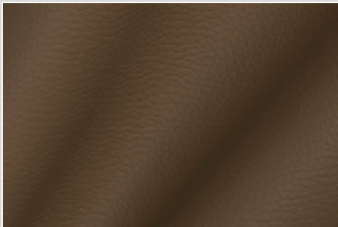
S32



S33



S34



S36