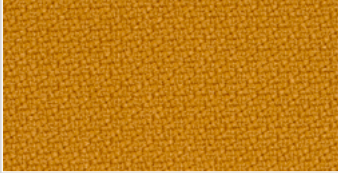




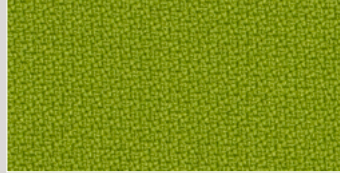
ST – Tessuto Fabric Gabriel, Step

Designer: Inger Mosholt Nielsen. Composizione: tessuto raffinato, 100% Trevira CS. Peso: 470 g/ml. Reazione al fuoco: UNI 9175 Classe 1IM, IMO MSC 307(88) Annex 1 part 8, MED Certificate IMO, DIN 4102 B1, NFP 92-503/504/505 M1, BS EN 1021 1&2 Cigarette and Match, BS 5852 Part 1 0, 1 Cigarette & Match, BS 5852 Crib 5, ÖNORM B 3825-B1-3800-Q1 UK, FAR/JAR 25.853 (a) (i) (ii), BS 7176 Medium hazard, AM 18 - NF D 60-013 (solo per tessuti), US California Technical Bulletin 117-2013, DIN EN 13501-1 B-s1, d0. Abrasione: EN ISO 12947-2: 100.000 cicli Martindale. Pilling: EN ISO 12945-2: 4-5. Stabilità del colore alla luce: EN ISO 105-B02:5-7. Solidità dei colori allo sfregamento: EN ISO 105x12 (bagnato/asciutto): 4-5. Test acustico resistenza al flusso d'aria: EN 29053. Test assorbimento acustico: ISO 354. Colore: può verificarsi una leggera differenza. Test ambientali: Oeko Tex, conforme a EU ecolabel "The Flower", 100% senza metalli pesanti.

Designer: Inger Mosholt Nielsen. Composizione: fabric with delicate surface, 100% Trevira CS. Weight: 470 g/lm. Flammability: IMO MSC 307(88) Annex 1 part 8; MED Certificate IMO; DIN 4102 B1; NFP 92-503/504/505 M1; BS EN 1021 1&2 Cigarette and Match; BS 5852 Part 1 0, 1 Cigarette & Match; BS 5852 Crib 5; ÖNORM B 3825-B1-3800-Q1 UK; FAR/JAR 25.853 (a) (i) (ii); BS 7176 Medium hazard; AM 18-NF D60-013 (only for fabric); US California Technical Bulletin 117-2013; UNI 9175 Classe 1IM; DIN EN 13501-1 B-s1, d0. Abrasion: EN ISO 12947-2: 100.000 Martindale cycles. Pilling: EN ISO 12945-2: 4-5. Colour fastness to light: EN ISO 105-B02: 5-7. Colour fastness to rubbing: EN ISO 105x12 (wet/dry): 4-5. Acoustic test air flow resistance: EN 29053. Acoustic test sound absorption: ISO 354. Colour: slight difference may occur. Environment: Oeko Tex, complies with EU ecolabel "The Flower", 100% free of heavy metals. US Act: AATCC 16 Colour fastness to light; AATCC 8 or 116 Wet/dry crocking; ASTM D3511 Pilling; ASTM D4157-07 Wyz abrasion (heavy duty); CA TB 117-2013.



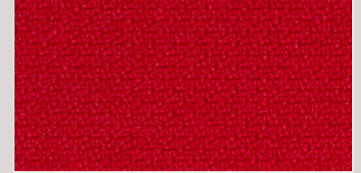
ST08_Step62057



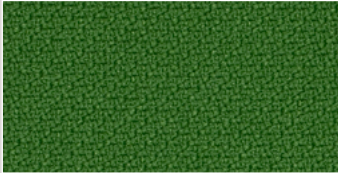
ST10_Step68162



ST04_Step60011



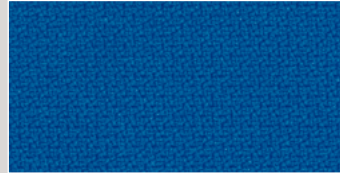
ST07_Step64013



ST12_Step68120



ST03_Step60021



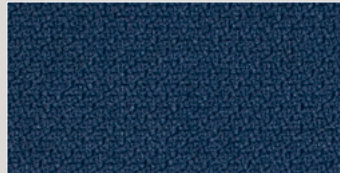
ST05_Step66151



ST11_Step61149



ST02_Step66019



ST06_Step65011



ST09_Step60004



ST01_Step60999