



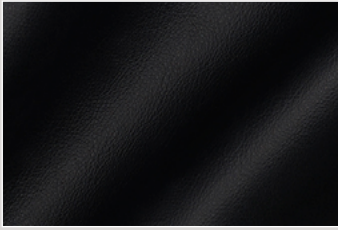
ISO 14025 EPD



TS—Pelle Leather Dani, Florida

Composizione: vera pelle pieno fiore nappato liscio naturale, pigmentata con tintura all'anilina, da selezione di bovini di esclusiva origine europea. Colori solidi e resistenti. Reazione al fuoco: UNI EN ISO 1021 1&2 (mancata accensione); conforme al California TB 117-Section E. Resistenza del colore alla luce: UNI EN ISO 105-B02 ≥ 6 . Resistenza alla flessione: UNI EN ISO 5402 50.000 cicli senza danno. Resistenza dei colori allo sfregamento UNI EN ISO 11640 ≥ 4 (secco/bagnato). La pelle TS è certificata EPD, possiede il label "Pelle italiana full cycle" per una produzione interamente realizzata in Italia, è un prodotto Carbon Footprint ISO/TS 14067: 2013.

Composition: full grain real leather with a smooth and soft grain, natural pigmented with aniline dye, carefully selected from top quality bull hides that are exclusively of European origin. Flammability: UNI EN ISO 1021 1&2 (no ignition); complies with California TB 117-Section E. Colour fastness to light, UNI EN ISO 105-B02 ≥ 6 . Colour fastness to rubbing UNI EN ISO 11640 ≥ 4 (wet/dry). Flex resistance: UNI EN ISO 5402 50.000 cycles no damage. The TS leather is certified EPD, it's labelled "Italian origin of leather-full cycle", it's a product Carbon Footprint ISO/TS 14067: 2013; it's a product labelled RAL-GZ 430/4 by Deutsche Gütegemeinschaft Möbel ass. and labelled "Der Blaue Engel" by RAL GmbH..



TS01



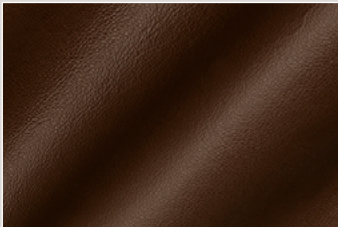
TS02



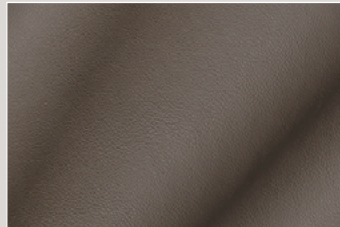
TS03



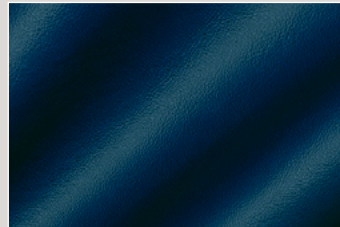
TS05



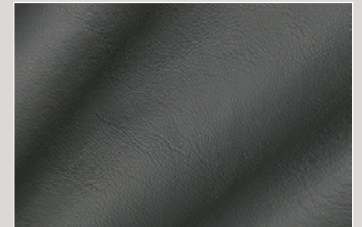
TS07



TS36



TS11



TS13



TS22



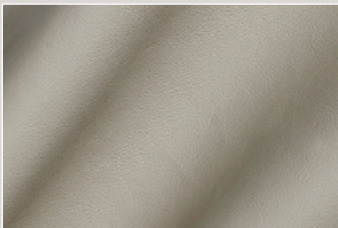
TS15



TS16



TS24



TS33