

**MW/MF**  
**Camira, Main Line Twist/Main Line Flax**

Cat. 4

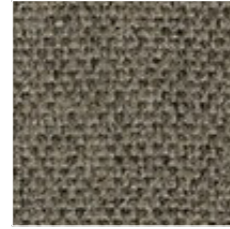
75% Virgin Wool, 25% Flax  
50.000 Martindale



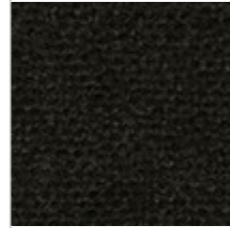
MW12\_Main Line Twist MLT12



MF61\_Main Line Flax MLF61



MF26\_Main Line Flax MLF26



MF28\_Main Line Flax MLF28



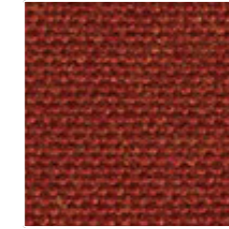
MF66\_Main Line Flax MLF66



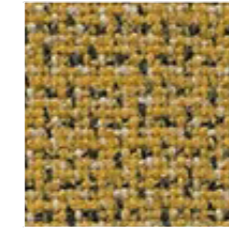
MW14\_Main Line Twist MLT14



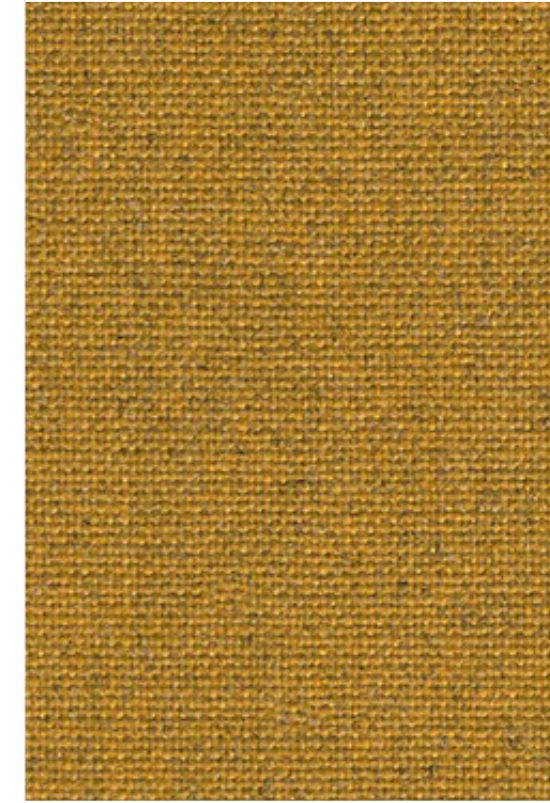
MW02\_Main Line Twist MLT02



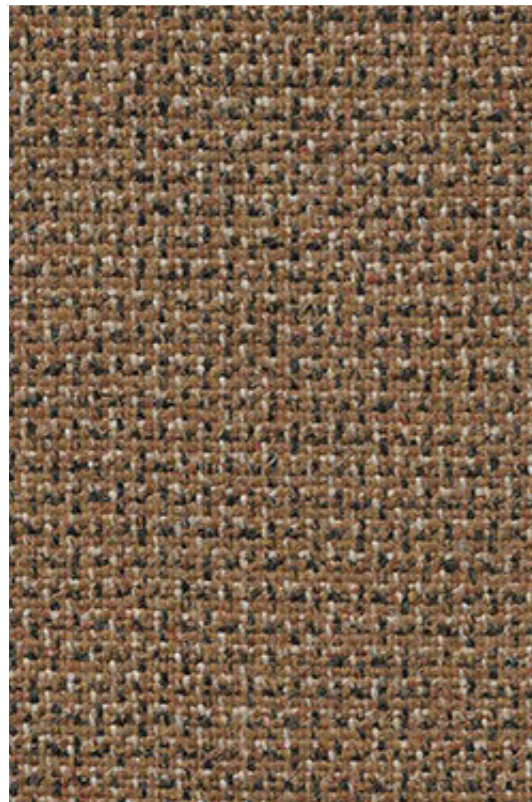
MF45\_Main Line Flax MLF45



MW01\_Main Line Twist MLT01



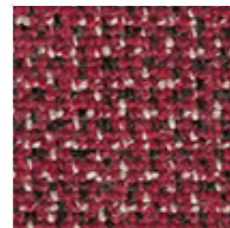
MF17\_Main Line Flax MLF17



MW10\_Main Line Twist MLT10



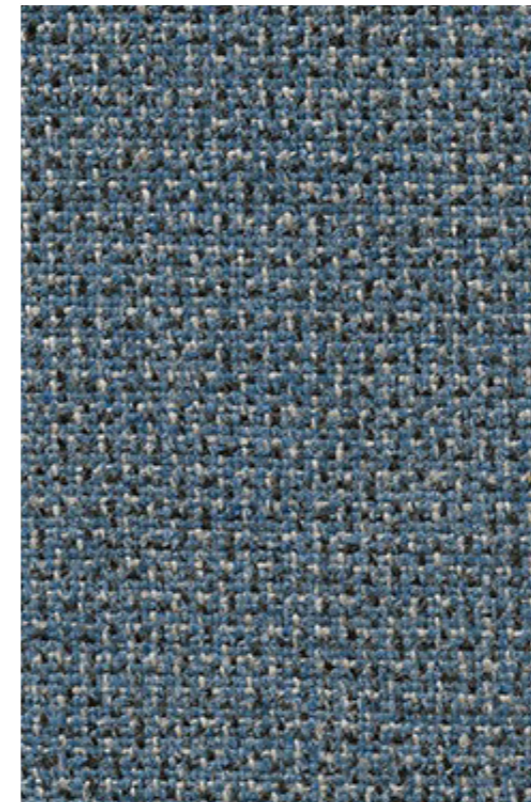
MF59\_Main Line Flax MLF59



MW03\_Main Line Twist MLT03



MF06\_Main Line Flax MLF06



MW04\_Main Line Twist MLT04



MF51\_Main Line Flax MLF51




MF50\_Main Line Flax MLF50

	<b>Composizione</b>	<b>Composition</b>
<b>WV</b>	Lana Vergine	Virgin Wool


**Note sui rivestimenti** — Per ragioni tecniche non è possibile garantire lo stesso tono di colore tra un lotto di produzione ed un altro. Leggere differenze, con una tolleranza del  $\pm 5\%$  devono intendersi come normali e non possono dar adito a reclami o alla risoluzione del contratto. Sitland spa si riserva il diritto di apportare modifiche alle finiture contenute nella presente cartella senza preavviso alcuno. Ulteriori informazioni sulle caratteristiche tecniche di ogni singolo rivestimento sono disponibili nel sito [www.sitland.com](http://www.sitland.com)

**Pulizia e manutenzione** – Per la manutenzione dei tessuti consigliamo di passare con frequenza almeno mensile la superficie, utilizzando un aspirapolvere. In caso di unto, utilizzare solamente un panno leggermente umido e sapone neutro, non strofinare e lasciare asciugare naturalmente.

	<b>Caratteristiche</b>	<b>Features</b>
	Ignifugo	Flame retardant

**Note on upholstery** – For technical reasons, batch to batch variations in shade may occur. Slight differences, within a tolerance of  $\pm 5\%$ , are to be considered as normal and acceptable and they cannot give rise to claims or to a breach of contract. Sitland spa reserves the right to make modifications to the finishes contained in the present folder without any prior communication. Further information on the technical characteristics of each individual upholstery is available on the website [www.sitland.com](http://www.sitland.com)

**Cleaning and maintenance** – For the fabrics maintenance, we suggest you to regularly vacuum clean. Stains can be cleaned with a soft damp cloth and mild soap; do not rub and allow to dry naturally.

	<b>Certificazioni</b>	<b>Certifications</b>
	EU Ecolabel è un marchio europeo che certifica il ridotto impatto ambientale del prodotto	EU Ecolabel is a European brand that certifies the reduced environmental impact of the product

**Sitland spa**  
 Via Cà Silvestre 52  
 36024 Nanto, Vicenza - I  
 t +39 0444 637100  
 f +39 0444 638407  
[info@sitland.com](mailto:info@sitland.com)  
[www.sitland.com](http://www.sitland.com)

Follow us on

